

Installation of **METOLIGHT**[®] LED-Track Lights

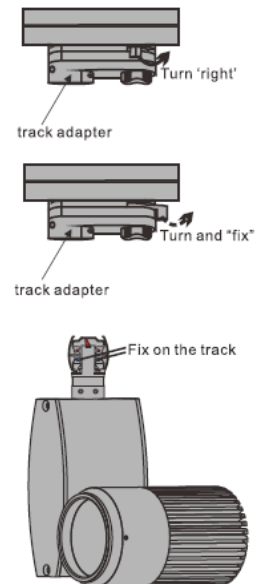
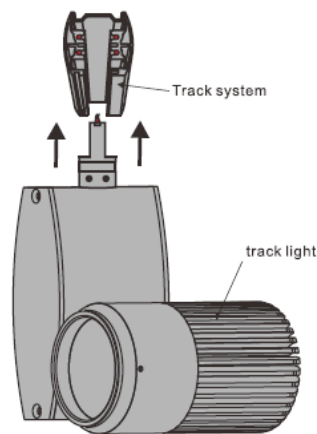
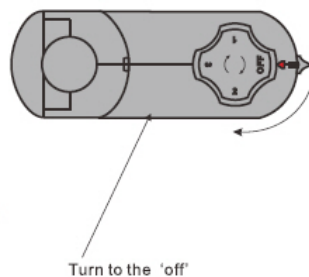
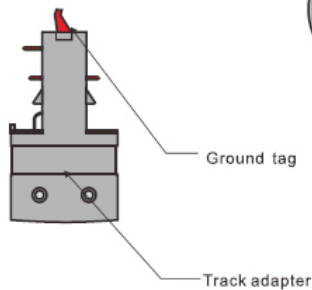
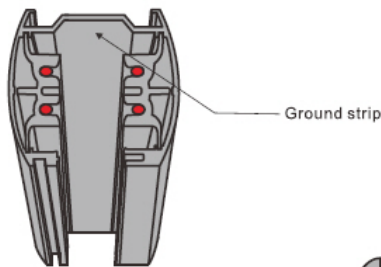
Caution:

- The LED tracklights may only be installed by an electrician. The general safety regulations for handling electricity must be observed.
- The tracklights may only be operated at AC voltage 200 - 240 VAC - 50/60 Hz. Operation with dimmers is only possible with specially designed tracklights with dimmable LED drivers.
- Before installing the tracklights, the power supply must be off and secured against accidental power-on

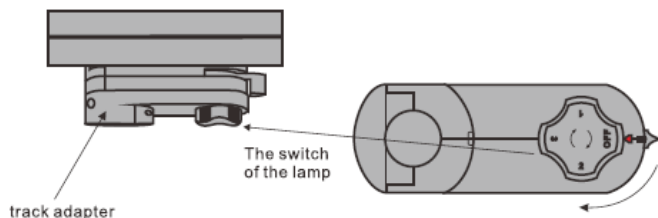


Installation:

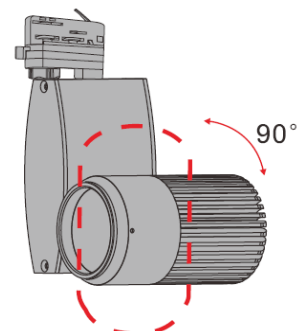
1. Power off track rail
2. turn knob at tracklight socket to Off-position
3. Attach the tracklight into the track system please care the edge at socket and rail to match
4. turn right the fix button at the track adapter



5. After the track light is fixed to the track system turn the switch at the light socket to choose 1, 2 or 3 to select the desired circuit



6. Adjust tracklight to desired direction
7. Power-on track system



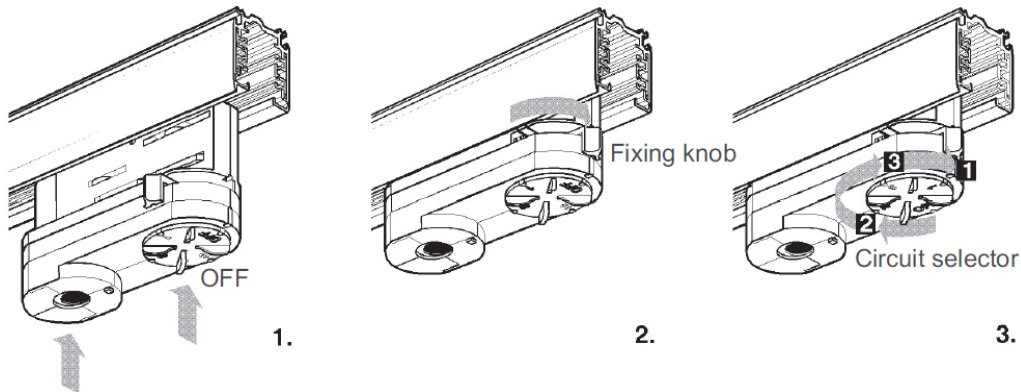
Trouble Shooting

If the lamp does not light up, please do the following

1. Check if track light is correctly inserted and switched to one of the 3 circuit phases.
The fixing knob must be turned right and show to the front of the socket

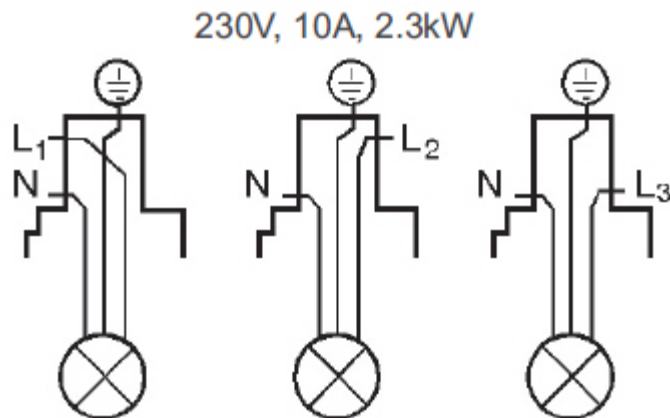
Please note:

There is an edge on the rail and one on the base of the luminaire. These must not lie on top of each other. Only if the luminaire is installed correctly, it will sit straight on the rail and can be switched on correctly.



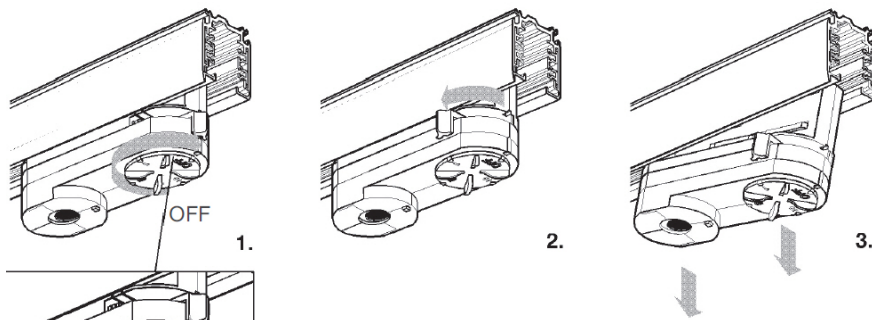
2. Switch the tracklight to another circuit phase

3. Check if track system is powered on
4. Check if track system is correctly wired
5. Check if track system is supplied with 230 VAC (Check the input connector for correct wiring)



6. Call Asmetec for further advice

7. Uninstall tracklight and send back to Asmetec



The above statements are based on our present knowledge. Our statements should not be interpreted as a guarantee of characteristics. The use of our products by our customers is subject to different conditions, therefore none of our customers are relieved of the responsibility of testing our products by themselves. A liability for consequential damage will not be accepted in any case. For damage resulting from the use of this information we can only be held responsible if there is evidence of malice or negligence on our part. This data-sheet replaces any previous data sheets.

ASMETEC, METODRILL, METOCHECK, METOLIGHT, METOSTAT, METOCLEAN and METO are registered trade marks of ASMETEC GmbH.
TRACKLIGHT-INSTALLATION-E.DOCX, VERSION JAN-18