

## METOLIGHT® LED-Floor-Stand Light FSL-4040E-DP

The LED floor lamp FSL-4040E-DP is a timelessly modern LED lamp in an aluminum housing with a matt, break-proof PMMA cover for direct and indirect lighting, with an integrated dimmer and PIR motion sensor. The base has a recess so that the floor lamp can be positioned between two desks. The integrated power supply unit is flicker-free, the light color of the built-in LEDs is neutral white, 4000K. The luminaire cover is matt so that a UGR value <19 is achieved. The highly qualified LED chips from the Epistar brand have an efficiency of 120 lm / W, which means that the luminaire achieves energy class E. (For comparison: incandescent lamps only have approx. 14 lm / W, fluorescent tubes / energy-saving lamps only approx. 70 lm / W) Über den integrierten Dimmer kann die Leuchte in der Helligkeit flimmerfrei geregelt werden.

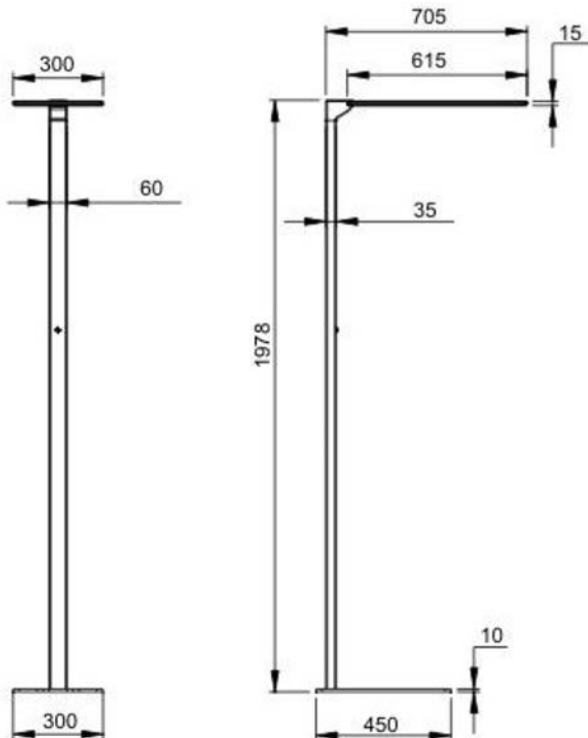
**METOLIGHT®**  
LED-FSL-4040-RDP  
2 x 40 Watt  
dimmbar / PIR-Sensor  
Alu-Eloxiert



The PIR sensor detects the presence of people and switches the light on automatically and off again after 8 minutes if movement is not detected.

A daylight sensor is also optionally available, which only switches the light on when the ambient brightness falls below an adjustable level (version FSL-4040-E-DPS)

### Luminaire sizes



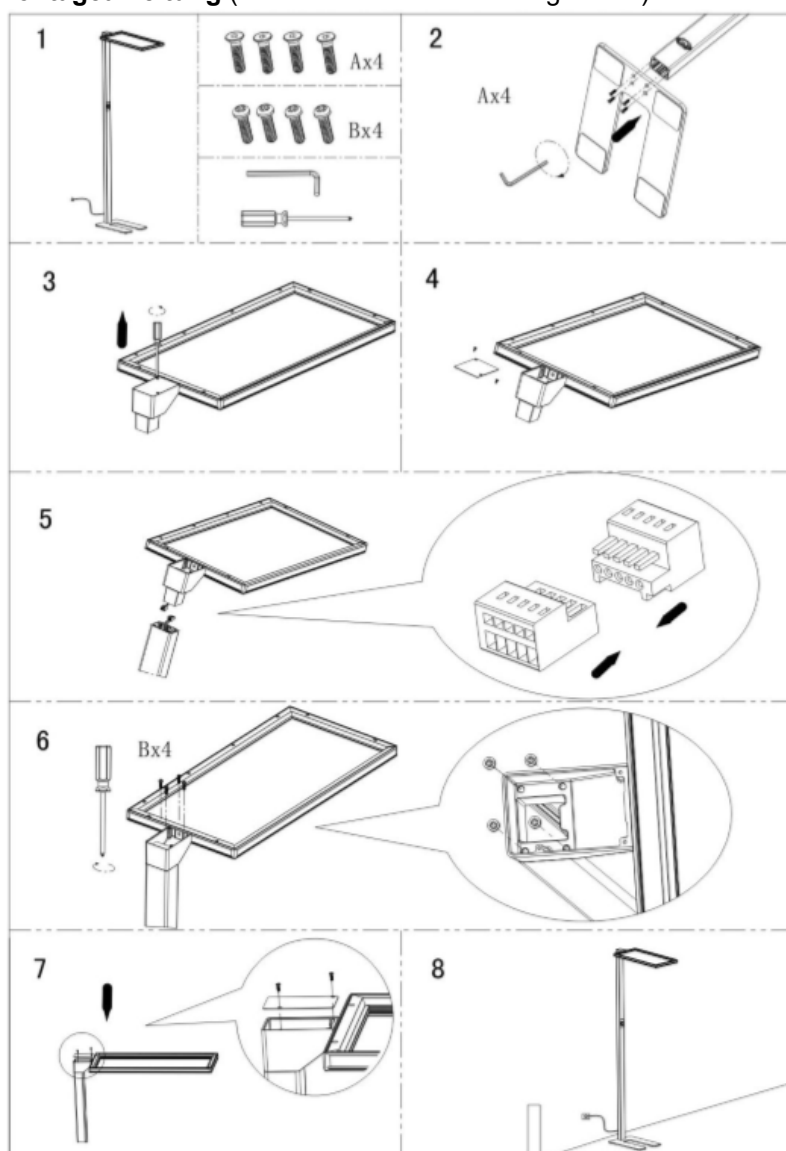
### Example



## Technische Daten

Product	METOLIGHT FSL-4040E-DP
Power	80 Watt
Voltage	110-255 VAC - 45-63Hz
Beam angle	2 x 120°
Light color	4000K (optional 3000K, 6000K)
LED Typ	Epistar SMD 2835 - 120 lm/W
CRI	Ra >80
Lumen maintance	L70B50
Light püower	2 x 4000 lm
Dimming	0-10V
Housinmg	Aluminium anodised
Height	198 cm
Width head	30 cm
Length head	61 cm
Diameter stand	3,5 x 6 cm
Weight	Ca. 13 kg
Classes	IP20 – only for dry indoor use
Environment	-20 ~ +40°C, 10 ~ 80%rH,
Energieklasse	E
Entspricht	CE, RoHS, EN 50581:2012, EN55015:2013, EN60598-1:2015, EN60598-2-2:2012, EN60968:1990, EN60969, EN61000-3-2:2014, EN61000-3-3:2013, EN 61547:2013, EN61000-4-6:2014, EMC 2014/30/EU, RoHS 2011/65/EU

## Montageanleitung (Leuchte wird in 2 Kartons geliefert)



### CE-Konformität CE-conformity

Dieser Artikel fällt unter  
die EU-Verordnung  
*This item is under EC-  
regulation:*  
1194/2012.

Er erfüllt die Richtlinien  
*it fulfils these rules:*

ErP 2009/125/EU  
NRS/LVD 2014/35/EU  
EMV/EMC 2014/30/EU  
RoHS 2011/65/EU  
WEEE - 2012/19/EU

**Asmetec - WEEE**  
DE74399040

The above statements are based on our present knowledge. Our statements should not be interpreted as a guarantee of characteristics. The use of our products by our customers is subject to different conditions, therefore none of our customers are relieved of the responsibility of testing our products by themselves. A liability for consequential damage will not be accepted in any case. For damage resulting from the use of this information we can only be held responsible if there is evidence of malice or negligence on our part. This data-sheet replaces any previous data sheets.

ASMETEC, METODRILL, METOCHECK, METOLIGHT, METOSTAT, METOCLEAN and METO are registered trade marks of ASMETEC GmbH.

LED-FSL-4040E-DP-DB-E.DOCX, VERSION SEP-21

# Manual

## 1. Packing content

- Light Panel
- Licht stand
- 1,5 m cable
- Screws M5 x 20
- Manual

## 2. Notes

Please read these instructions carefully. For further product specifications, please refer to our special technical data sheets. These instructions apply to several versions of our LED floor lamps. Depending on the design, the elements described below may not be installed or in a modified version.

After unpacking, you should check whether the parts are free of mechanical damage that could have occurred during transport. In the event of errors, please take sufficient photos of the damaged area as well as the transport packaging and the shipping label with the tracking number.

The assembly may only be carried out by a qualified electrician in compliance with the general safety regulations for dealing with electricity

## 3. Area of application

Disconnect the luminaire from the power supply during installation, maintenance and repair work. The luminaire has protection class IP20 and may only be used in dry indoor areas. Protect the product from moisture, dirt and overheating. Never cover the product with thermally insulating materials. Use the product only for the intended purpose of illuminating workplaces. The luminaire consists of non-replaceable LEDs and a power supply unit. Do not disassemble or modify the lamp. It is only designed for connection to the 230 VAC - 50 Hz power supply. In the event of a defect, send the luminaire to Asmetec in Kirchheimbolanden for repair

## 4. Cleaning

Cleaning is limited to the surface. No moisture may get into the connection parts or on live parts. Before cleaning the lamp, disconnect it from the power supply. Use a dry, soft cloth to clean it. Stubborn stains can be removed with a damp cleaning cloth. Do not use acidic, abrasive or corrosive cleaners

## 5. Operation

To power on / off use the rotablöe knob

### Change of brightness (/ if included in your version)

The daylight sensor is part of a constant light system. Set the desired brightness with the rotary switch, the daylight sensor saves the result and automatically dims / brightens the luminaire (up to the minimum / maximum light output) depending on the ambient light that fills the room.

### Motion sensor (if included in your version)

The sensor detects movements from approx. 3 m / sec and switches the light on automatically. If no movement has been detected for 8 minutes, it switches the light off again.

## 6. Waste treatment

At the end of its service life, the product must be disposed of properly. It must not be disposed of with normal household waste, but must be returned to the recycling center or Asmetec for professional recycling of LED lights. Dispose of the packaging according to type.

## Asmetec GmbH

Carl-Benz-Str. 4  
67292 Kirchheimbolanden  
www.asmetec.de  
info@asmetec.de  
Tel:06352-750680