

## METOLIGHT® LED-TriProof Light Series DAL-IP66-7R

The METOLIGHT® DAL-IP66-7R LED TriProof luminaires are designed for use in damp rooms, cellars, garages, car washes, as well as in cold stores. The housing is made of impact-resistant polycarbonate and corresponds to the classes IP66 / IK08. The semi-transparent prism diffuser made of polycarbonate distributes the light to approx. 160°. The aluminum core PCB is equipped with high performance Epistar branded SMD LEDs. The integrated Philips power supply unit is designed for input voltages between 100 - 255 V AC 50/60 Hz for long-lasting, low-maintenance operation up to approx. 50,000 hours (L70B50)

The holder clips for the diffuser and the mounting brackets for the lamp are made of stainless steel. The LED circuit board is built into the removable diffuser. Thus, the LEDs are protected against accidental contact, in addition, the installation is significantly simplified: The tub housing with the integrated power supply (optional with motion and / or emergency) is attached via the supplied mounting clips to the ceiling or wall, the power cable connected to the terminal, finally, the LED panel is only connected to the power supply via a plug and clipped onto the tub support.

Optionally, this lamp can also be supplied with an emergency module for 3 hours emergency lighting, as well as with 0-10 V or DALI dimmable power supply or with integrated, adjustable motion sensor. This LED light does not emit UV light. Plastics therefore do not become brittle, insects are not attracted by the light.

The series DAL-IP66-7R is available in the lengths 60 cm (20 W + 30 W), 120 cm (40W + 50W) and 150 cm (50W + 60W) in the light colors 3000K, 4000K (standard), 5000K and 6500K, CRI Ra > 83. The efficiency of the LEDs is 130 lm / W.



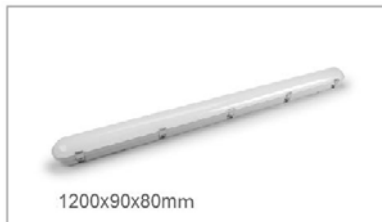
### Applications:

General lighting in damp rooms, protected outdoor areas, cellars, garages, freeze rooms etc.

### Details:



## Sizes:



## Mounting materials supplied:



## Application example:



## Technical data:

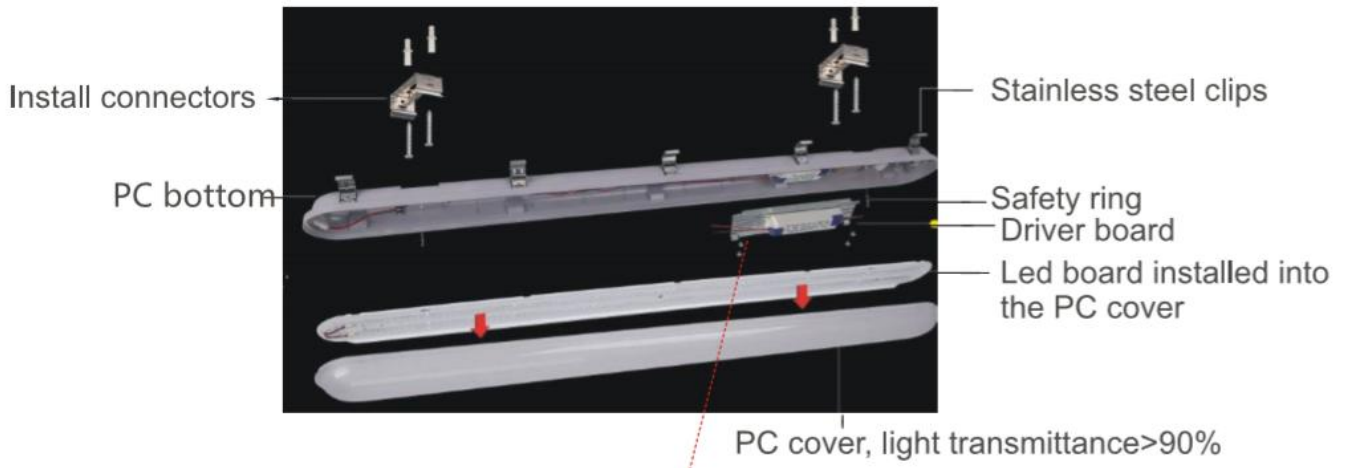
	<b>DAL-IP66-7R-060</b>	<b>DAL-IP66-7R-120</b>	<b>DAL-IP66-7R-150</b>
Replaces CFL	2 x 18 W	2 x 36 W	2 x 58 W
Sizes	60 x 9 x 8 cm	120 x 9 x 8 cm	150 x 9 x 8 cm
Weight	1,45 kg	2,35 kg	3,15 kg
Input Voltage	Typ. 100 - 255 VAC / 50/60 Hz		
Powerfactor	Pf > 0,90		
Power	20 Watt / 30 Watt	40 Watt / 50 Watt	50 Watt / 60 Watt
Lightpower 6000K	2400 lm / 3600 lm	4800 lm / 6000 lm	6600 lm / 7200 lm
Available light colours	2700-3300K / 3800 – 4200K / 4800 – 5300K / 5800 – 6500K		
Rendering Index	CRI Ra > 80		
Beam angle	< 160°		
Environment	-15 ~ + 35°C, 10 ~ 90%rH		
IP-class	IP 66		
IK-class	IK 08		
Hot wire test	850°C		
Housing	Polycarbonate, grey RAL 7035		
Mounting material	Stainless steel		
Tests acc to.	LM70-08 / LM80-08		
Certified	CE		
Options	0-10V – or DALI-Dimming, Emergency lighting, motion sensor		

## Notes



Do not connect to dimmers  
 Do not use under water  
 Installation only by electrician , line must be powered off  
 Not apply do alcalic cleaners, acids, solvents  
 Not suitable for exproof areas

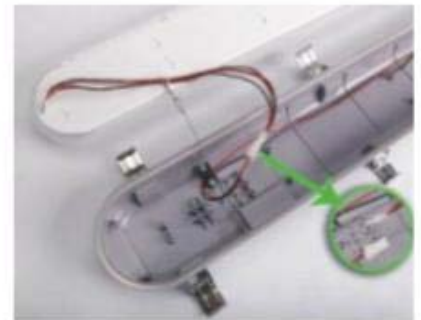
## System build



**Note:** adjustable, dimmable driver, emergency set, microwave sensor are optionally.



Led board was installed into the PC cover, avoid to touch by people or tools



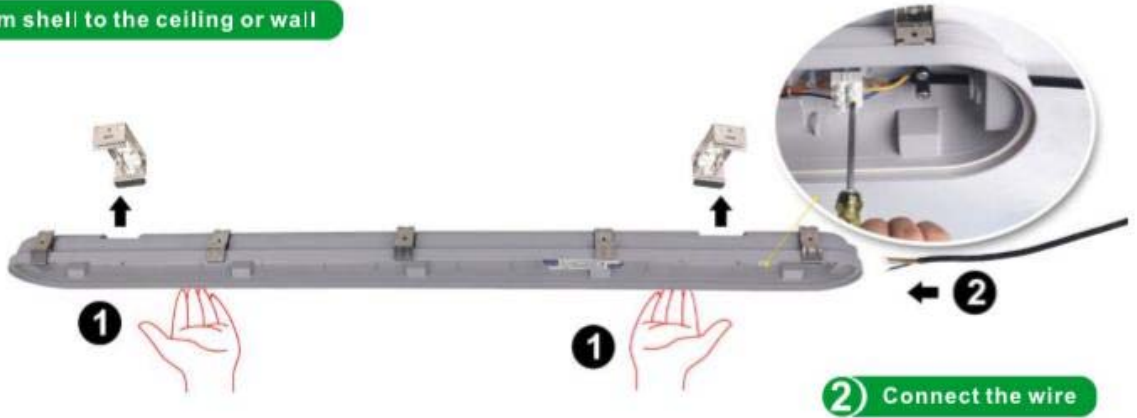
## Easy Installation:

Electrical installation may only be carried out by trained electricians taking into account the current safety regulations when dealing with electricity.

The power installation may only be carried out on voltage-free cables!



### 1) Fix the bottom shell to the ceiling or wall



### 2) Connect the wire

### 3) Fix the cover to the bottom shell



### 4) Close the cover and the clips!



This luminaire complies with the latest rules of EN 55015, 61000-3-2, 61000-3-3, 61000-4-2 bis 4-8, 61547, 60598-1, 60598-2, 62321,



The above statements are based on our present knowledge. Our statements should not be interpreted as a guarantee of characteristics. The use of our products by our customers is subject to different conditions, therefore none of our customers are relieved of the responsibility of testing our products by themselves. A liability for consequential damage will not be accepted in any case. For damage resulting from the use of this information we can only be held responsible if there is evidence of malice or negligence on our part. This data-sheet replaces any previous data sheets.

ASMETEC, METODRILL, METOCHECK, METOLIGHT, METOSTAT, METOCLEAN and METO are registered trade marks of ASMETEC GmbH.  
LED-DAL-IP66-7R-DB-E.doc, version Sep-21