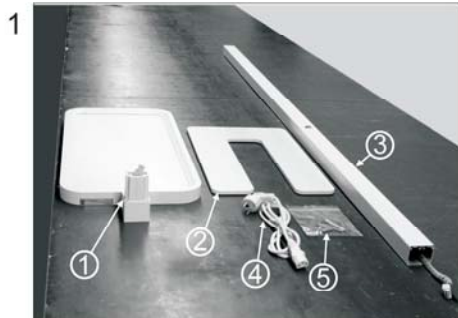


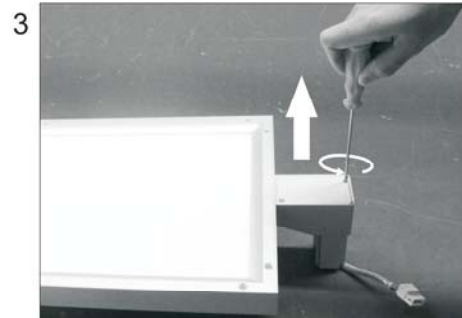
Installation Instruction LED-Floor-Stand-Light FSL-4040



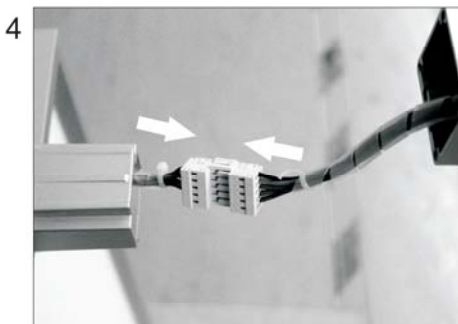
Product list: ① lamp body ② base plate
③ pole ④ power cord
⑤ accessories bag



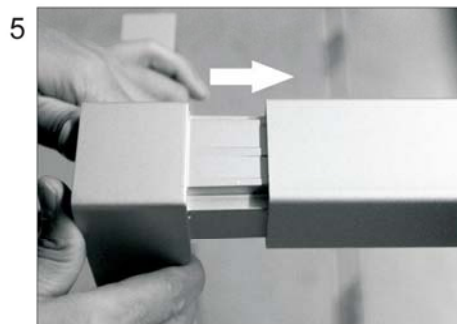
Fix the bottom pole onto base plate



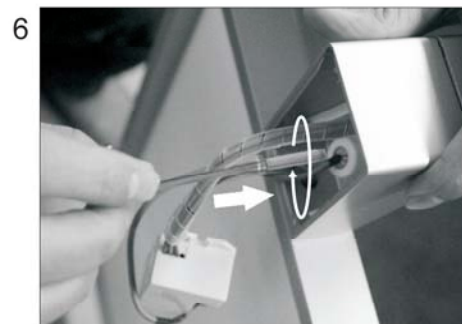
Open the box of lamp body



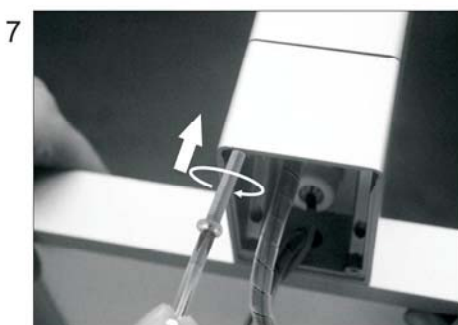
Connect the terminal block



Insert the lamp holder into
the other end of the pole



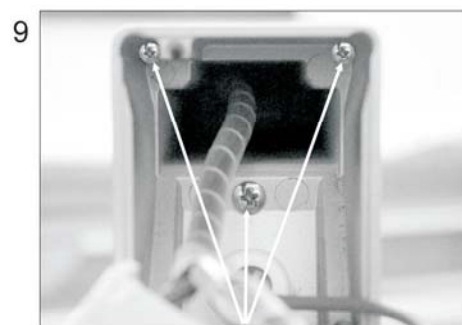
Fix the lamp holder with screws-1



Fix the lamp holder with screws-2



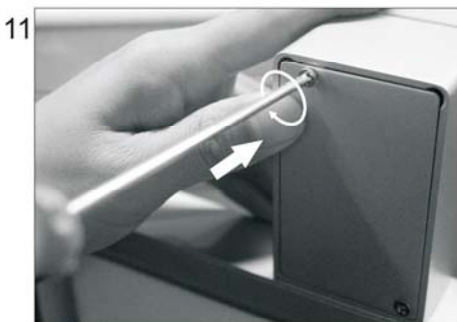
Fix the lamp holder with screws-3



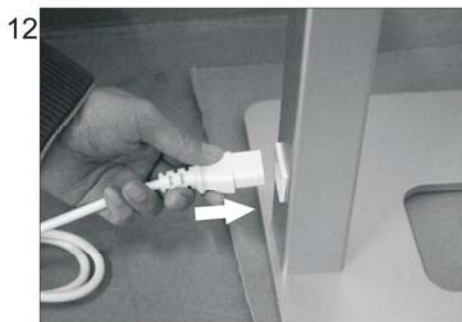
Lamp holder 'xed ready by step 6, 7, 8



Fix the PIR sensor into the holder



Close the box by screws



Insert the power cord