

Lightsource Test Report

Product Information

Product Category: LED-Lampen
 Product Spec: LED-SLG39-E40-36-NW
 Manufacturer: METOLIGHT
 Buyer: 3811

Product Type: LED-Strassenlampen
 Product Number: 1
 Submitted Unit: 105234

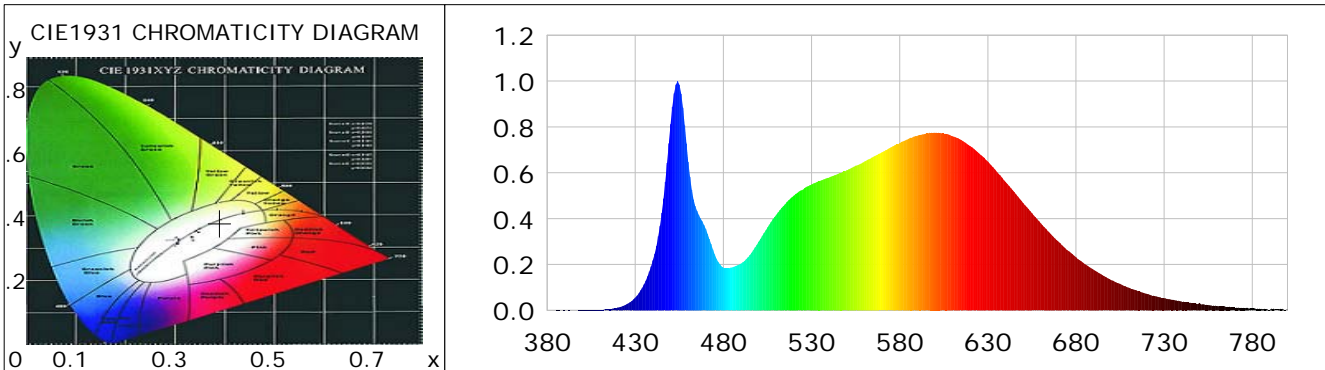
CIE Colorimetric Parameters

Chromaticity coordinates: $x=0.3900$ $y=0.3789$ $u(u')=0.2306$ $v=0.3360$ $v'=0.5039$
 CCT: $T_c=3764K$ ($duv=-0.00167$) Color Ratio: $R=0.196$ $G=0.771$ $B=0.033$
 Peak Wavelength: 454.0nm Half Bandwidth: 16.4nm
 Dominant Wavelength: 580.8nm Color Purity: 0.308
 CRI: $R_a=85.0$, $avgR(1\sim14)=79.0$, $avgR(1\sim15)=79.1$ TM30: $R_f=84$, $R_g=97$
 GAI: $GAI_BB_8=96.9$, $GAI_BB_15=104.8$, $GAI_EES=72.5$

R1 =85	R2 =91	R3 =94	R4 =84	R5 =84	R6 =86	R7 =87	R8 =70
R9 =25	R10=77	R11=82	R12=59	R13=86	R14=97	R15=80	

Color Quality Scale: $Q_a=83.6$, $Q_f=83.3$, $Q_p=84.6$, $Q_g=95.0$

Q1 =85	Q2 =98	Q3 =78	Q4 =74	Q5 =81	Q6 =84	Q7 =86	Q8 =89
Q9 =97	Q10=88	Q11=85	Q12=85	Q13=85	Q14=78	Q15=80	



Photometric Parameters

Luminous Flux: 5292.1 lm Efficiency: 143.77 lm/W Radiant Power: 16.446 W
 Total mains efficacy: 143.77 lm/W Energy Efficiency Class: D (EU 2019/2015)
 Pupil Flux: 7730.26 Plm Pupil Lumens Per Watt: 210.00 Plm/W Pupil Factor (Kp): 1.461
 Circopic Flux: 15450.07 lm

Electric Parameters

Voltage: 231.00V Current: 0.1650A Power: 36.81W
 Power Factor: 0.9610 Frequency: 49.99Hz

Test Information

Scan Range: 380~800:1nm Photometric Method: sphere-spectroradiometer
 Stabilization Time: 0 ms ALC.: 1.0000 Photometric Condition: Sphere diameter: 2.00m, 4PI
 Max of Signal: 46427 (2546) CCD Integration Time: 58.09 ms

Condition: Tx:22.5'C, Ti:0.0'C, R.H.:60%
 Test Lab:
 Operator: CRE

Test Device: Lisun LMS-9000B
 Test Time: 2021-02-11 15:01:36
 Inspector:

Lightsource Test Report

Product Information

Product Category: LED-Lampen
 Product Spec: LED-SLG39-E40-36-NW
 Manufacturer: METOLIGHT
 Buyer: 3811

Product Type: LED-Strassenlampen
 Product Number: 1
 Submitted Unit: 105234

WL(nm)	PL	PE(mW/nm)	WL(nm)	PL	PE(mW/nm)	WL(nm)	PL	PE(mW/nm)
380	0.0006	0.0764	525	0.5260	62.7666	670	0.3004	35.8467
385	0.0007	0.0875	530	0.5489	65.4994	675	0.2632	31.4045
390	0.0008	0.0980	535	0.5649	67.4169	680	0.2319	27.6735
395	0.0005	0.0653	540	0.5799	69.1957	685	0.2015	24.0422
400	0.0010	0.1208	545	0.5948	70.9809	690	0.1768	21.0945
405	0.0013	0.1538	550	0.6115	72.9670	695	0.1531	18.2732
410	0.0027	0.3251	555	0.6306	75.2513	700	0.1314	15.6852
415	0.0052	0.6186	560	0.6489	77.4388	705	0.1152	13.7466
420	0.0119	1.4228	565	0.6699	79.9401	710	0.0985	11.7558
425	0.0259	3.0930	570	0.6899	82.3238	715	0.0841	10.0409
430	0.0554	6.6103	575	0.7111	84.8632	720	0.0722	8.6150
435	0.1132	13.5113	580	0.7296	87.0695	725	0.0615	7.3356
440	0.2184	26.0569	585	0.7480	89.2600	730	0.0533	6.3630
445	0.4252	50.7354	590	0.7615	90.8685	735	0.0465	5.5434
450	0.8119	96.8885	595	0.7714	92.0541	740	0.0384	4.5788
455	0.9844	117.4717	600	0.7752	92.5079	745	0.0335	3.9974
460	0.6481	77.3377	605	0.7715	92.0594	750	0.0325	3.8824
465	0.4339	51.7830	610	0.7591	90.5908	755	0.0237	2.8231
470	0.3549	42.3461	615	0.7431	88.6795	760	0.0190	2.2668
475	0.2446	29.1930	620	0.7168	85.5389	765	0.0153	1.8206
480	0.1871	22.3233	625	0.6845	81.6833	770	0.0123	1.4662
485	0.1875	22.3793	630	0.6488	77.4210	775	0.0110	1.3114
490	0.2044	24.3866	635	0.6048	72.1669	780	0.0086	1.0246
495	0.2412	28.7772	640	0.5605	66.8814	785	0.0064	0.7596
500	0.2995	35.7379	645	0.5159	61.5626	790	0.0036	0.4333
505	0.3622	43.2231	650	0.4684	55.8928	795	0.0047	0.5584
510	0.4174	49.8079	655	0.4241	50.6031	800	0.0043	0.5079
515	0.4631	55.2610	660	0.3803	45.3877			
520	0.5012	59.8100	665	0.3386	40.4066			

Condition: Tx:22.5'C, Ti:0.0'C, R.H.:60%
 Test Lab:
 Operator: CRE

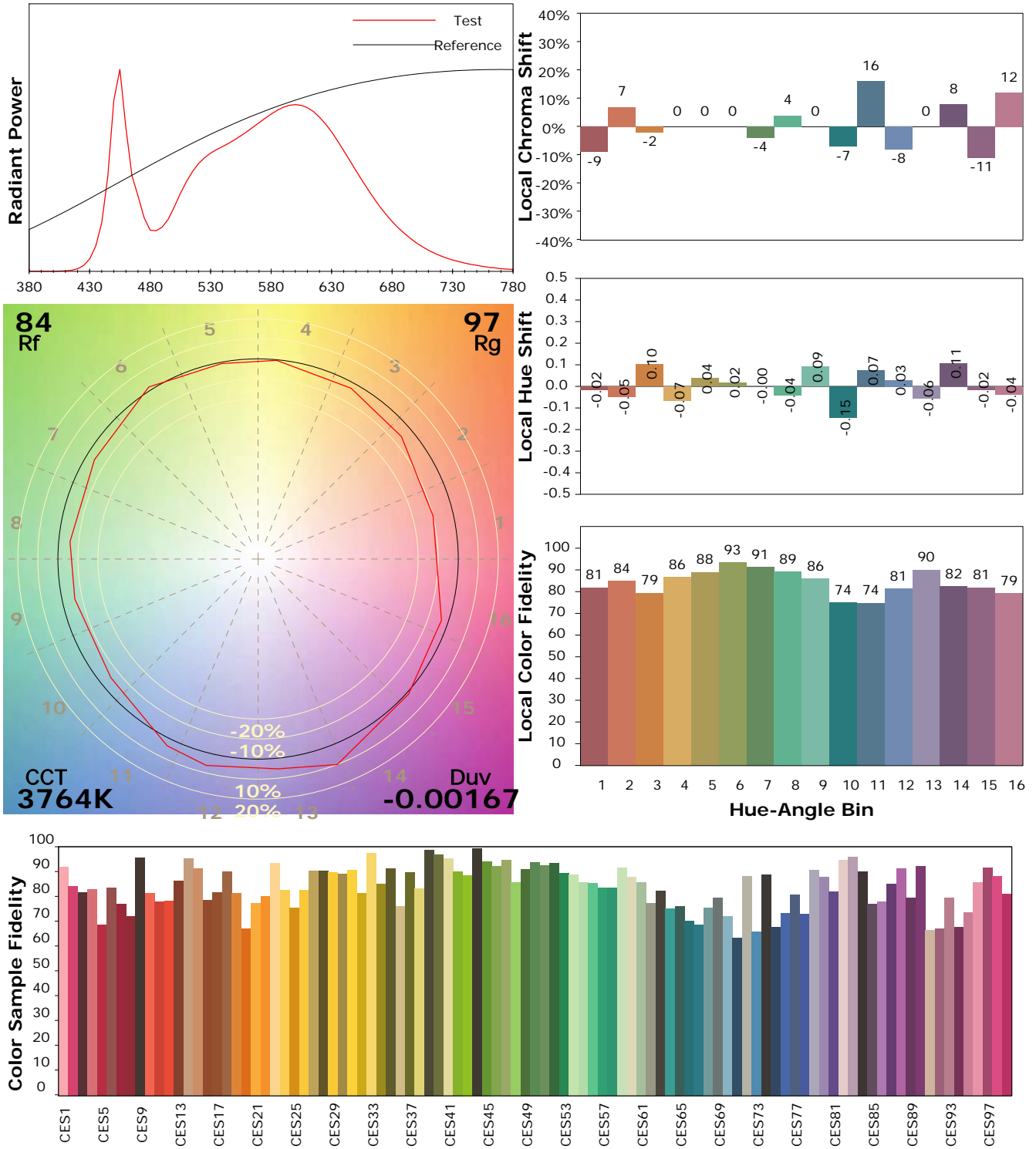
Test Device: Lisun LMS-9000B
 Test Time: 2021-02-11 15:01:36
 Inspector:

IES TM-30-18 Color Rendition Report

Product Information

Product Category: LED-Lampen
 Product Spec: LED-SLG39-E40-36-NW
 Manufacturer: METOLIGHT
 Buyer: 3811

Product Type: LED-Strassenlampen
 Product Number: 1
 Submitted Unit: 105234



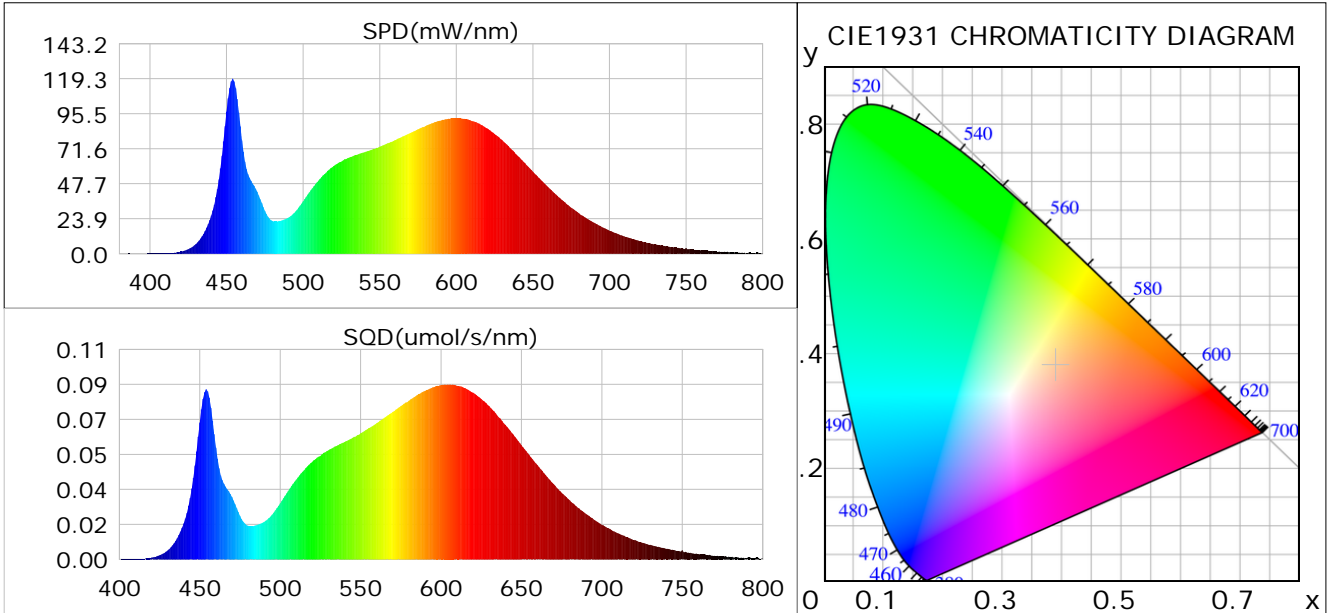
Condition: Tx:22.5°C, Ti:0.0°C, R.H.:60%
 Test Lab:
 Operator: CRE

Test Device: Lisun LMS-9000B
 Test Time: 2021-02-11 15:01:36
 Inspector:

Plant optical param data

CIE Colorimetric Parameters

Chromaticity coordinates: $x=0.3900$ $y=0.3789$ $u(u')=0.2306$ $v=0.3360$ $v'=0.5039$
 CCT: $T_c=3764K$ ($duv=-0.00167$) Color Ratio: $R=0.196$ $G=0.771$ $B=0.033$
 Peak Wavelength: 454.0nm Half Bandwidth: 16.4nm
 Dominant Wavelength: 580.8nm Color Purity: 0.308
 CRI: $R_a=85.0$



Plant Optical Param

$ \mu_v(lm): 5292.10$	$Q_v(lm.s): 5292.10$
$ \mu_e, \dot{E}(W/nm): 16.45$	$Q_e(J): 16.45$
$ \mu_e(W): 15.99$	$ \mu_{fr}(W): 0.49$
$ \zeta_e: 0.43$	$ \zeta_{fr}: 0.01$
$PPE(umol/s/w): 2.05$	$K_{fr}: 0.08$
$Erb_Ratio: 1.75$	$PPF(umol/s): 75.58$
$PF_{uv}(360-400)(umol/s): 0.01$	$PPF(400-500)(umol/s): 12.28$
$PPF(500-600)(umol/s): 33.64$	$PPF(600-700)(umol/s): 29.67$
$PPF_{fr}(700-800)(umol/s): 2.87$	$PPF.t(umol): 75.58$
$ \mu_{ch-A.t}(J): 1.26$	$ \mu_{ch-A}(W): 1.26$
$ \mu_{ch-B.t}(J): 0.74$	$ \mu_{ch-B}(W): 0.74$
$ \mu_b.t(J): 3.18$	$ \mu_b(W): 3.18$
$ \mu_y.t(J): 7.27$	$ \mu_y(W): 7.27$
$ \mu_r.t(J): 5.66$	$ \mu_r(W): 5.66$

Electric Parameters

Voltage: 231.00V	Current: 0.1650A	Power: 36.81W
Power Factor: 0.9610	Frequency: 49.99Hz	

Condition: $T_x:22.5^\circ C$, $T_i:0.0^\circ C$, R.H.:60%
 Test Lab:
 Operator: CRE

Test Device: Lisun LMS-9000B
 Test Time: 2021-02-11 15:01:36
 Inspector: