

Lightsource Test Report

Product Information

Product Category: LED-Lampen
 Product Spec: LED-SLG22-E27-28-360-WW
 Manufacturer: METOLIGHT
 Buyer: 3811

Product Type: LED-Strassenlampen
 Product Number: 1
 Submitted Unit: 104225

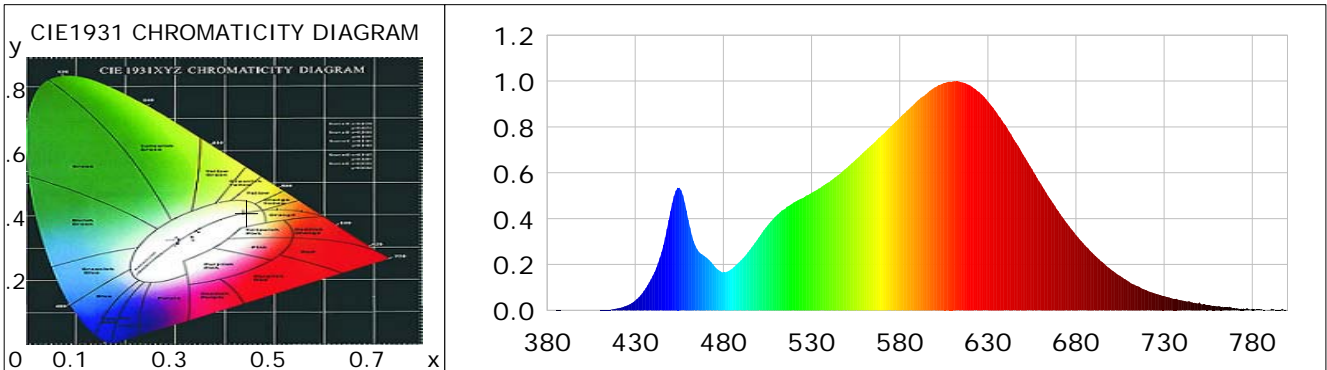
CIE Colorimetric Parameters

Chromaticity coordinates: $x=0.4448$ $y=0.4106$ $u(u')=0.2528$ $v=0.3501$ $v'=0.5251$
 CCT: $T_c=2924K$ ($duv=0.00152$) Color Ratio: $R=0.238$ $G=0.738$ $B=0.024$
 Peak Wavelength: 611.1nm Half Bandwidth: 137.2nm
 Dominant Wavelength: 582.6nm Color Purity: 0.568
 CRI: $R_a=85.7$, $avgR(1\sim14)=80.7$, $avgR(1\sim15)=80.6$ TM30: $R_f=87$, $R_g=96$
 GAI: $GAI_BB_8=90.1$, $GAI_BB_15=98.4$, $GAI_EES=49.8$

R1 =84	R2 =92	R3 =98	R4 =85	R5 =84	R6 =91	R7 =86	R8 =67
R9 =24	R10=81	R11=84	R12=71	R13=86	R14=99	R15=78	

Color Quality Scale: $Q_a=85.4$, $Q_f=87.3$, $Q_p=86.0$, $Q_g=91.6$

Q1 =82	Q2 =95	Q3 =85	Q4 =82	Q5 =85	Q6 =86	Q7 =86	Q8 =89
Q9 =96	Q10=92	Q11=89	Q12=88	Q13=87	Q14=77	Q15=79	



Photometric Parameters

Luminous Flux: 3435.1 lm Efficiency: 116.13 lm/W Radiant Power: 10.614 W
 Total mains efficacy: 116.13 lm/W Energy Efficiency Class: E (EU 2019/2015)
 Pupil Flux: 4260.67 Plm Pupil Lumens Per Watt: 144.04 Plm/W Pupil Factor (Kp): 1.240
 Circopic Flux: 7674.64 lm

Electric Parameters

Voltage: 230.60V Current: 0.1320A Power: 29.58W
 Power Factor: 0.9670 Frequency: 49.99Hz

Test Information

Scan Range: 380~800:1nm Photometric Method: sphere-spectroradiometer
 Stabilization Time: 0 ms ALC.: 1.0000 Photometric Condition: Sphere diameter: 2.00m, 4PI
 Max of Signal: 44656 (2669) CCD Integration Time: 121.44 ms

Condition: $T_x=23.2^{\circ}C$, $T_i=0.0^{\circ}C$, R.H.: 60%
 Test Lab:
 Operator: CRE

Test Device: Lisun LMS-9000B
 Test Time: 2021-02-11 12:08:37
 Inspector:

Lightsource Test Report

Product Information

Product Category: LED-Lampen
 Product Spec: LED-SLG22-E27-28-360-WW
 Manufacturer: METOLIGHT
 Buyer: 3811

Product Type: LED-Strassenlampen
 Product Number: 1
 Submitted Unit: 104225

WL(nm)	PL	PE(mW/nm)	WL(nm)	PL	PE(mW/nm)	WL(nm)	PL	PE(mW/nm)
380	0.0004	0.0268	525	0.4899	34.1592	670	0.4334	30.2227
385	0.0008	0.0561	530	0.5129	35.7666	675	0.3784	26.3862
390	0.0007	0.0503	535	0.5345	37.2728	680	0.3287	22.9234
395	0.0001	0.0060	540	0.5598	39.0353	685	0.2838	19.7911
400	0.0004	0.0306	545	0.5894	41.0974	690	0.2445	17.0465
405	0.0000	0.0031	550	0.6216	43.3460	695	0.2097	14.6213
410	0.0009	0.0603	555	0.6567	45.7950	700	0.1767	12.3202
415	0.0032	0.2201	560	0.6929	48.3192	705	0.1502	10.4749
420	0.0087	0.6085	565	0.7281	50.7713	710	0.1252	8.7312
425	0.0200	1.3948	570	0.7656	53.3883	715	0.1056	7.3647
430	0.0427	2.9795	575	0.8026	55.9682	720	0.0874	6.0961
435	0.0854	5.9536	580	0.8403	58.5971	725	0.0737	5.1387
440	0.1513	10.5472	585	0.8761	61.0907	730	0.0626	4.3648
445	0.2557	17.8288	590	0.9140	63.7330	735	0.0506	3.5320
450	0.4325	30.1587	595	0.9433	65.7767	740	0.0433	3.0184
455	0.5343	37.2598	600	0.9727	67.8284	745	0.0363	2.5325
460	0.3959	27.6059	605	0.9914	69.1360	750	0.0349	2.4321
465	0.2672	18.6343	610	0.9981	69.6001	755	0.0225	1.5715
470	0.2321	16.1823	615	0.9951	69.3914	760	0.0173	1.2031
475	0.1917	13.3675	620	0.9808	68.3958	765	0.0125	0.8733
480	0.1654	11.5367	625	0.9525	66.4232	770	0.0082	0.5725
485	0.1821	12.6983	630	0.9106	63.5019	775	0.0079	0.5514
490	0.2183	15.2261	635	0.8618	60.0954	780	0.0067	0.4666
495	0.2632	18.3558	640	0.8076	56.3137	785	0.0052	0.3649
500	0.3173	22.1285	645	0.7422	51.7550	790	0.0017	0.1196
505	0.3698	25.7844	650	0.6792	47.3605	795	0.0021	0.1444
510	0.4130	28.8016	655	0.6166	42.9972	800	0.0037	0.2613
515	0.4432	30.9027	660	0.5522	38.5090			
520	0.4708	32.8276	665	0.4899	34.1611			

Condition: Tx:23.2'C, Ti:0.0'C, R.H.:60%
 Test Lab:
 Operator: CRE

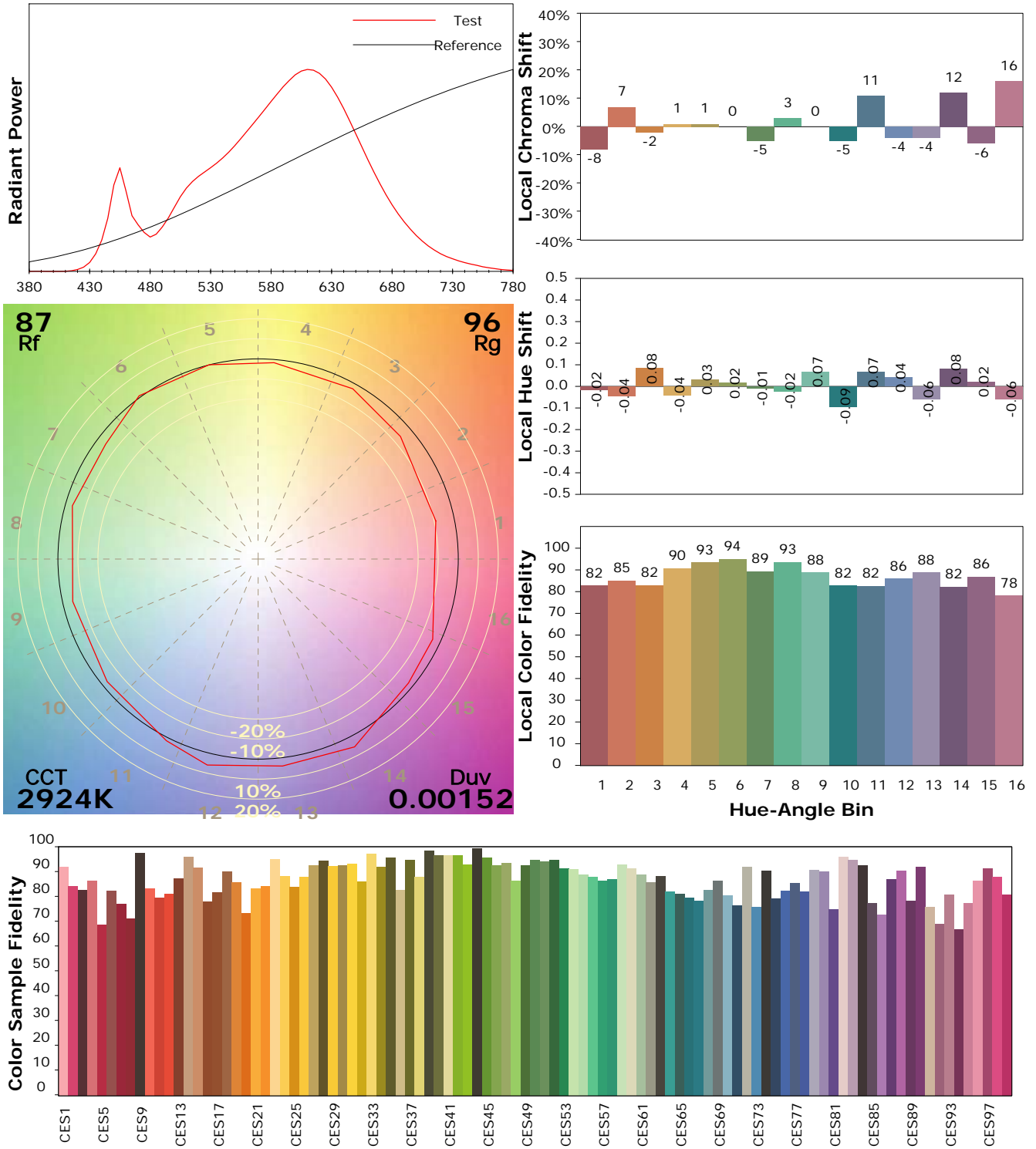
Test Device: Lisun LMS-9000B
 Test Time: 2021-02-11 12:08:37
 Inspector:

IES TM-30-18 Color Rendition Report

Product Information

Product Category: LED-Lampen
 Product Spec: LED-SLG22-E27-28-360-WW
 Manufacturer: METOLIGHT
 Buyer: 3811

Product Type: LED-Strassenlampen
 Product Number: 1
 Submitted Unit: 104225



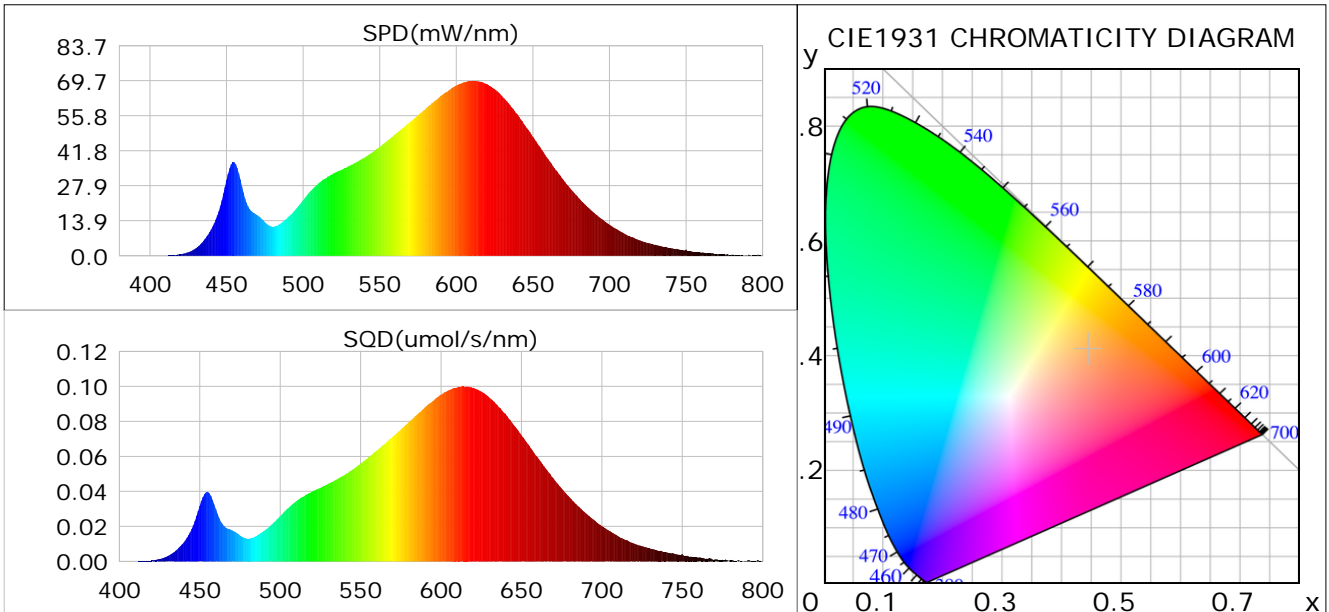
Condition: Tx:23.2°C, Ti:0.0°C, R.H.:60%
 Test Lab:
 Operator: CRE

Test Device: Lisun LMS-9000B
 Test Time: 2021-02-11 12:08:37
 Inspector:

Plant optical param data

CIE Colorimetric Parameters

Chromaticity coordinates: $x=0.4448$ $y=0.4106$ $u(u')=0.2528$ $v=0.3501$ $v'=0.5251$
 CCT: $T_c=2924K$ ($duv=0.00152$) Color Ratio: $R=0.238$ $G=0.738$ $B=0.024$
 Peak Wavelength: 611.1nm Half Bandwidth: 137.2nm
 Dominant Wavelength: 582.6nm Color Purity: 0.568
 CRI: $R_a=85.7$



Plant Optical Param

$ \mu_v(lm)$: 3435.10	$Q_v(lm.s)$: 3435.10
$ \mu_e, \dot{E}(W/nm)$: 10.61	$Q_e(J)$: 10.61
$ \mu_e(W)$: 10.30	$ \mu_{fr}(W)$: 0.33
$ \zeta_e$: 0.35	$ \zeta_{fr}$: 0.01
PPE(umol/s/w): 1.69	Kfr: 0.07
Erb_Ratio: 3.56	PPF(umol/s): 50.09
PFuv(360-400)(umol/s): 0.00	PPF(400-500)(umol/s): 4.93
PPF(500-600)(umol/s): 21.07	PPF(600-700)(umol/s): 24.08
PPfr(700-800)(umol/s): 1.94	PPF.t(umol): 50.09
$ \mu_{ch-A.t}(J)$: 0.82	$ \mu_{ch-A}(W)$: 0.82
$ \mu_{ch-B.t}(J)$: 0.40	$ \mu_{ch-B}(W)$: 0.40
$ \mu_b.t(J)$: 1.27	$ \mu_b(W)$: 1.27
$ \mu_y.t(J)$: 4.53	$ \mu_y(W)$: 4.53
$ \mu_r.t(J)$: 4.58	$ \mu_r(W)$: 4.58

Electric Parameters

Voltage: 230.60V	Current: 0.1320A	Power: 29.58W
Power Factor: 0.9670	Frequency: 49.99Hz	

Condition: $T_x=23.2^\circ C$, $T_i=0.0^\circ C$, R.H.: 60%
 Test Lab:
 Operator: CRE

Test Device: Lisun LMS-9000B
 Test Time: 2021-02-11 12:08:37
 Inspector: