

Lightsource Test Report

Product Information

Product Category: LED-Lampen
 Product Spec: LED-SLG35-E40-110-NW
 Manufacturer: METOLIGHT
 Buyer: 3811

Product Type: LED-Strassenlampe
 Product Number: 1
 Submitted Unit: 103789

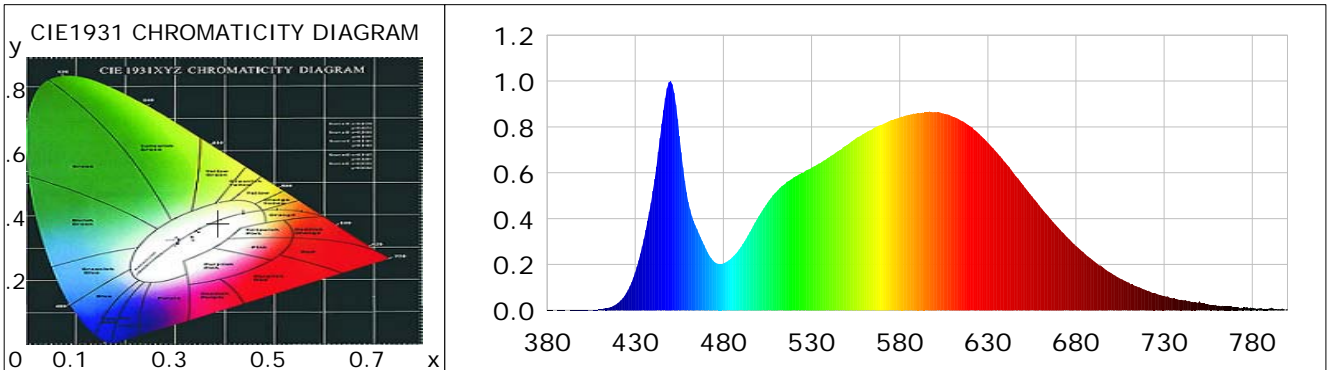
CIE Colorimetric Parameters

Chromaticity coordinates: $x=0.3869$ $y=0.3787$ $u(u')=0.2286$ $v=0.3356$ $v'=0.5034$
 CCT: $T_c=3843K$ ($duv=-0.00093$) Color Ratio: $R=0.191$ $G=0.777$ $B=0.032$
 Peak Wavelength: 449.8nm Half Bandwidth: 19.8nm
 Dominant Wavelength: 580.1nm Color Purity: 0.298
 CRI: $R_a=84.2$, $avgR(1\sim14)=78.4$, $avgR(1\sim15)=78.5$ TM30: $R_f=84$, $R_g=99$
 GAI: $GAI_BB_8=96.9$, $GAI_BB_15=102.4$, $GAI_EES=73.9$

R1 =83	R2 =89	R3 =92	R4 =84	R5 =83	R6 =84	R7 =88	R8 =71
R9 =25	R10=73	R11=83	R12=64	R13=84	R14=96	R15=79	

Color Quality Scale: $Q_a=83.9$, $Q_f=83.5$, $Q_p=85.3$, $Q_g=95.8$

Q1 =85	Q2 =98	Q3 =78	Q4 =77	Q5 =83	Q6 =84	Q7 =85	Q8 =90
Q9 =97	Q10=87	Q11=85	Q12=84	Q13=85	Q14=77	Q15=80	



Photometric Parameters

Luminous Flux: 13820 lm	Efficiency: 125.15 lm/W	Radiant Power: 43.265 W
Total mains efficacy: 147.17 lm/W	Energy Efficiency Class: D (EU 2019/2015)	
Pupil Flux: 20191.67 Plm	Pupil Lumens Per Watt: 182.85 Plm/W	Pupil Factor (Kp): 1.461
Cirtopic Flux: 39873.80 lm		

Electric Parameters

Voltage: 230.70V	Current: 0.4790A	Power: 110.43W
Power Factor: 0.9450	Frequency: 49.99Hz	

Test Information

Scan Range: 380~800:1nm	Photometric Method: sphere-spectroradiometer
Stabilization Time: 0 ms ALC.: 1.0000	Photometric Condition: Sphere diameter: 2.00m, 4PI
Max of Signal: 45807 (2773)	CCD Integration Time: 111.83 ms

Condition: Tx:24.5'C, Ti:0.0'C, R.H.:60%
 Test Lab:
 Operator: CRE

Test Device: Lisun LMS-9000B
 Test Time: 2021-02-16 11:08:18
 Inspector:

Lightsource Test Report

Product Information

Product Category: LED-Lampen
 Product Spec: LED-SLG35-E40-110-NW
 Manufacturer: METOLIGHT
 Buyer: 3811

Product Type: LED-Strassenlampe
 Product Number: 1
 Submitted Unit: 103789

WL(nm)	PL	PE(mW/nm)	WL(nm)	PL	PE(mW/nm)	WL(nm)	PL	PE(mW/nm)
380	0.0011	0.3092	525	0.5978	161.3394	670	0.3604	97.2650
385	0.0001	0.0177	530	0.6226	168.0158	675	0.3190	86.0840
390	0.0010	0.2592	535	0.6428	173.4753	680	0.2811	75.8689
395	0.0008	0.2135	540	0.6675	180.1427	685	0.2464	66.5015
400	0.0019	0.5086	545	0.6945	187.4346	690	0.2152	58.0910
405	0.0017	0.4649	550	0.7205	194.4427	695	0.1887	50.9263
410	0.0047	1.2598	555	0.7489	202.1048	700	0.1624	43.8207
415	0.0116	3.1338	560	0.7720	208.3520	705	0.1387	37.4289
420	0.0313	8.4481	565	0.7943	214.3612	710	0.1209	32.6339
425	0.0762	20.5590	570	0.8100	218.6039	715	0.1022	27.5822
430	0.1661	44.8362	575	0.8289	223.7043	720	0.0869	23.4566
435	0.3123	84.2935	580	0.8414	227.0712	725	0.0750	20.2539
440	0.5204	140.4481	585	0.8524	230.0511	730	0.0631	17.0257
445	0.8141	219.7072	590	0.8602	232.1398	735	0.0522	14.0942
450	1.0000	269.8783	595	0.8639	233.1575	740	0.0456	12.3041
455	0.7603	205.1989	600	0.8654	233.5420	745	0.0372	10.0516
460	0.4733	127.7297	605	0.8584	231.6609	750	0.0391	10.5620
465	0.3543	95.6071	610	0.8447	227.9747	755	0.0263	7.0930
470	0.2685	72.4576	615	0.8271	223.2280	760	0.0198	5.3423
475	0.2105	56.8003	620	0.8022	216.4975	765	0.0192	5.1795
480	0.2047	55.2440	625	0.7698	207.7643	770	0.0146	3.9488
485	0.2307	62.2485	630	0.7307	197.2080	775	0.0124	3.3416
490	0.2760	74.4817	635	0.6890	185.9552	780	0.0118	3.1915
495	0.3409	92.0030	640	0.6438	173.7524	785	0.0101	2.7327
500	0.4099	110.6217	645	0.5939	160.2888	790	0.0086	2.3077
505	0.4696	126.7248	650	0.5464	147.4626	795	0.0058	1.5552
510	0.5170	139.5343	655	0.4973	134.2014	800	0.0073	1.9766
515	0.5516	148.8750	660	0.4487	121.0903			
520	0.5804	156.6291	665	0.4029	108.7330			

Condition: Tx:24.5'C, Ti:0.0'C, R.H.:60%
 Test Lab:
 Operator: CRE

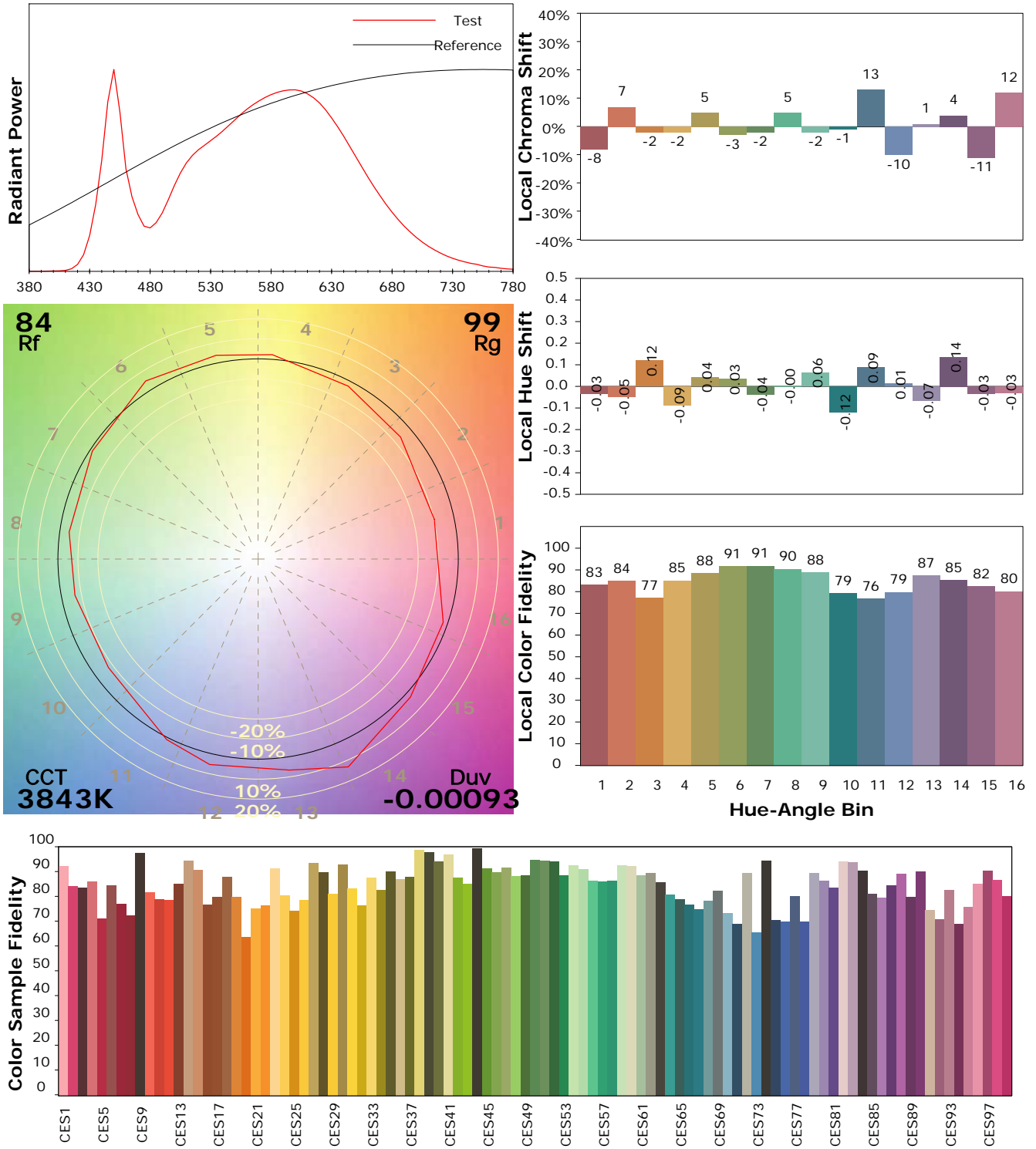
Test Device: Lisun LMS-9000B
 Test Time: 2021-02-16 11:08:18
 Inspector:

IES TM-30-18 Color Rendition Report

Product Information

Product Category: LED-Lampen
 Product Spec: LED-SLG35-E40-110-NW
 Manufacturer: METOLIGHT
 Buyer: 3811

Product Type: LED-Strassenlampe
 Product Number: 1
 Submitted Unit: 103789



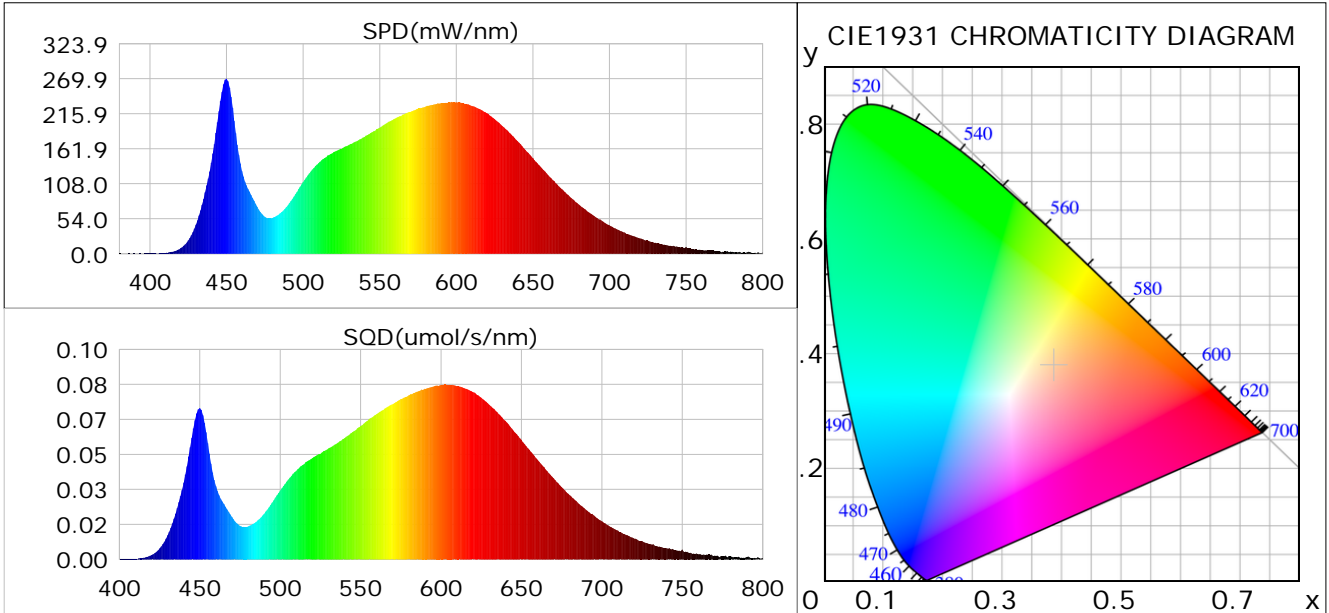
Condition: Tx:24.5°C, Ti:0.0°C, R.H.:60%
 Test Lab:
 Operator: CRE

Test Device: Lisun LMS-9000B
 Test Time: 2021-02-16 11:08:18
 Inspector:

Plant optical param data

CIE Colorimetric Parameters

Chromaticity coordinates: $x=0.3869$ $y=0.3787$ $u(u')=0.2286$ $v=0.3356$ $v'=0.5034$
 CCT: $T_c=3843K$ ($duv=-0.00093$) Color Ratio: $R=0.191$ $G=0.777$ $B=0.032$
 Peak Wavelength: 449.8nm Half Bandwidth: 19.8nm
 Dominant Wavelength: 580.1nm Color Purity: 0.298
 CRI: $R_a=84.2$



Plant Optical Param

$ \mu_v(lm): 13820.00$	$Q_v(lm.s): 13820.00$
$ \mu_e, \dot{E}(W/nm): 43.26$	$Q_e(J): 43.26$
$ \mu_e(W): 42.02$	$ \mu_{fr}(W): 1.32$
$ \zeta_e: 0.38$	$ \zeta_{fr}: 0.01$
$PPE(umol/s/w): 1.80$	$K_{fr}: 0.07$
$Erb_Ratio: 1.70$	$PPF(umol/s): 198.26$
$PF_{uv}(360-400)(umol/s): 0.02$	$PPF(400-500)(umol/s): 32.61$
$PPF(500-600)(umol/s): 88.56$	$PPF(600-700)(umol/s): 77.09$
$PPF_{fr}(700-800)(umol/s): 7.74$	$PPF.t(umol): 198.26$
$ \mu_{ch-A.t}(J): 3.58$	$ \mu_{ch-A}(W): 3.58$
$ \mu_{ch-B.t}(J): 1.87$	$ \mu_{ch-B}(W): 1.87$
$ \mu_b.t(J): 8.50$	$ \mu_b(W): 8.50$
$ \mu_y.t(J): 19.18$	$ \mu_y(W): 19.18$
$ \mu_r.t(J): 14.69$	$ \mu_r(W): 14.69$

Electric Parameters

Voltage: 230.70V	Current: 0.4790A	Power: 110.43W
Power Factor: 0.9450	Frequency: 49.99Hz	

Condition: $T_x: 24.5^\circ C$, $T_i: 0.0^\circ C$, R.H.: 60%
 Test Lab:
 Operator: CRE

Test Device: Lisun LMS-9000B
 Test Time: 2021-02-16 11:08:18
 Inspector: