

Lightsource Test Report

Product Information

Product Category: LED-Lampen
 Product Spec: LED-SLG35-E40-80-DW
 Manufacturer: METOLIGHT
 Buyer: 3811

Product Type: LED-Strassenlampen
 Product Number: 1
 Submitted Unit: 103784

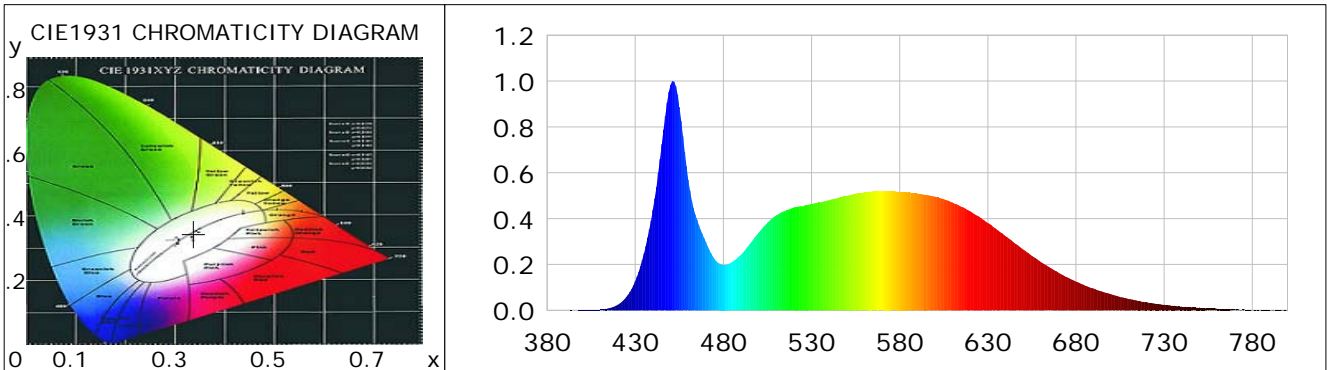
CIE Colorimetric Parameters

Chromaticity coordinates: $x=0.3373$ $y=0.3451$ $u(u')=0.2086$ $v=0.3202$ $v'=0.4803$
 CCT: $T_c=5298K$ ($duv=-0.00003$) Color Ratio: $R=0.157$ $G=0.797$ $B=0.047$
 Peak Wavelength: 451.4nm Half Bandwidth: 20.3nm
 Dominant Wavelength: 566.1nm Color Purity: 0.048
 CRI: $R_a=85.2$, $avgR(1\sim14)=79.1$, $avgR(1\sim15)=79.3$ TM30: $R_f=84$, $R_g=98$
 GAI: $GAI_BB_8=96.6$, $GAI_BB_15=101.4$, $GAI_EES=87.4$

R1 =85	R2 =89	R3 =91	R4 =86	R5 =85	R6 =84	R7 =88	R8 =74
R9 =24	R10=73	R11=86	R12=63	R13=86	R14=95	R15=81	

Color Quality Scale: $Q_a=82.8$, $Q_f=82.3$, $Q_p=84.4$, $Q_g=95.2$

Q1 =87	Q2 =97	Q3 =76	Q4 =74	Q5 =82	Q6 =85	Q7 =88	Q8 =91
Q9 =96	Q10=86	Q11=82	Q12=82	Q13=83	Q14=76	Q15=80	



Photometric Parameters

Luminous Flux: 10492 lm	Efficiency: 125.77 lm/W	Radiant Power: 33.501 W
Total mains efficacy: 147.91 lm/W	Energy Efficiency Class: D (EU 2019/2015)	
Pupil Flux: 18176.34 Plm	Pupil Lumens Per Watt: 217.89 Plm/W	Pupil Factor (Kp): 1.732
Cirtopic Flux: 39780.87 lm		

Electric Parameters

Voltage: 230.20V	Current: 0.3624A	Power: 83.42W
Power Factor: 0.9570	Frequency: 49.99Hz	

Test Information

Scan Range: 380~800:1nm	Photometric Method: sphere-spectroradiometer
Stabilization Time: 0 ms ALC.: 1.0000	Photometric Condition: Sphere diameter: 2.00m, 4PI
Max of Signal: 55424 (2001)	CCD Integration Time: 90.28 ms

Condition: $T_x=14.2^{\circ}C$, $T_i=0.0^{\circ}C$, R.H.: 60%
 Test Lab:
 Operator: CRE

Test Device: Lisun LMS-9000B
 Test Time: 2021-02-12 09:45:16
 Inspector:

Lightsource Test Report

Product Information

Product Category: LED-Lampen
 Product Spec: LED-SLG35-E40-80-DW
 Manufacturer: METOLIGHT
 Buyer: 3811

Product Type: LED-Strassenlampen
 Product Number: 1
 Submitted Unit: 103784

WL(nm)	PL	PE(mW/nm)	WL(nm)	PL	PE(mW/nm)	WL(nm)	PL	PE(mW/nm)
380	0.0004	0.1257	525	0.4527	140.6368	670	0.1650	51.2536
385	0.0007	0.2278	530	0.4641	144.1810	675	0.1440	44.7327
390	0.0006	0.1864	535	0.4703	146.1162	680	0.1263	39.2402
395	0.0005	0.1453	540	0.4803	149.2260	685	0.1085	33.7230
400	0.0013	0.4164	545	0.4904	152.3681	690	0.0953	29.6028
405	0.0019	0.5784	550	0.5002	155.3898	695	0.0816	25.3587
410	0.0035	1.0874	555	0.5088	158.0815	700	0.0701	21.7689
415	0.0091	2.8327	560	0.5149	159.9754	705	0.0586	18.2000
420	0.0242	7.5039	565	0.5195	161.3786	710	0.0498	15.4747
425	0.0588	18.2809	570	0.5193	161.3174	715	0.0416	12.9221
430	0.1274	39.5696	575	0.5196	161.4289	720	0.0354	10.9827
435	0.2481	77.0761	580	0.5165	160.4774	725	0.0293	9.0874
440	0.4387	136.3050	585	0.5143	159.7666	730	0.0246	7.6553
445	0.7249	225.2021	590	0.5098	158.3894	735	0.0197	6.1058
450	0.9832	305.4624	595	0.5038	156.5298	740	0.0162	5.0429
455	0.8870	275.5754	600	0.4963	154.1845	745	0.0141	4.3767
460	0.5703	177.1694	605	0.4854	150.8142	750	0.0125	3.8874
465	0.3959	122.9906	610	0.4698	145.9641	755	0.0088	2.7265
470	0.2991	92.9098	615	0.4521	140.4393	760	0.0070	2.1670
475	0.2232	69.3304	620	0.4322	134.2751	765	0.0055	1.7168
480	0.1978	61.4636	625	0.4088	126.9936	770	0.0040	1.2427
485	0.2113	65.6424	630	0.3808	118.3144	775	0.0042	1.3049
490	0.2428	75.4354	635	0.3531	109.6954	780	0.0010	0.3104
495	0.2897	90.0024	640	0.3238	100.5946	785	0.0013	0.4162
500	0.3390	105.3022	645	0.2944	91.4469	790	0.0009	0.2683
505	0.3829	118.9471	650	0.2657	82.5458	795	0.0011	0.3381
510	0.4145	128.7674	655	0.2380	73.9297	800	0.0037	1.1441
515	0.4333	134.6104	660	0.2115	65.7107			
520	0.4490	139.4820	665	0.1876	58.2685			

Condition: Tx: 14.2'C, Ti: 0.0'C, R.H.: 60%
 Test Lab:
 Operator: CRE

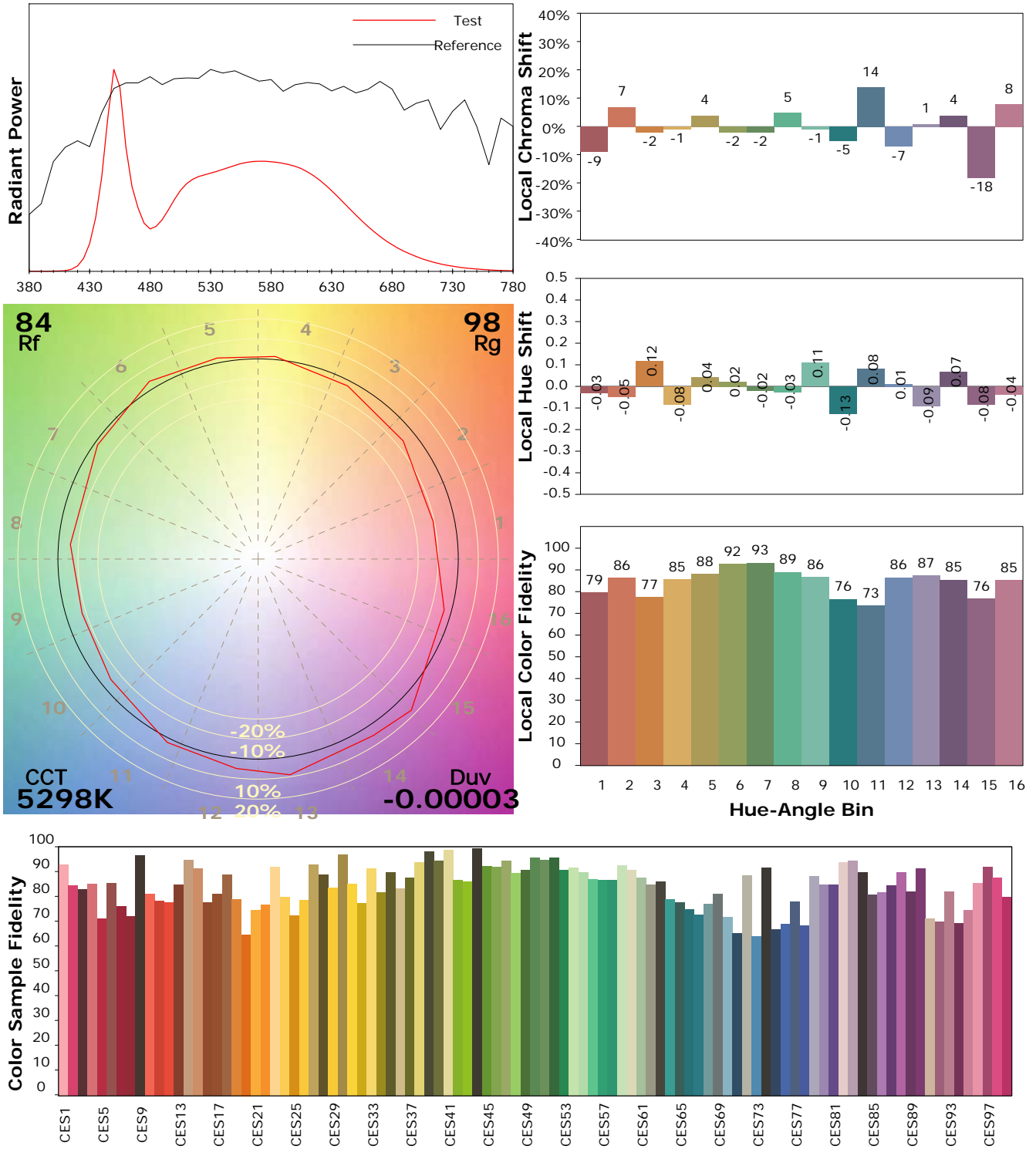
Test Device: Lisun LMS-9000B
 Test Time: 2021-02-12 09:45:16
 Inspector:

IES TM-30-18 Color Rendition Report

Product Information

Product Category: LED-Lampen
 Product Spec: LED-SLG35-E40-80-DW
 Manufacturer: METOLIGHT
 Buyer: 3811

Product Type: LED-Strassenlampen
 Product Number: 1
 Submitted Unit: 103784



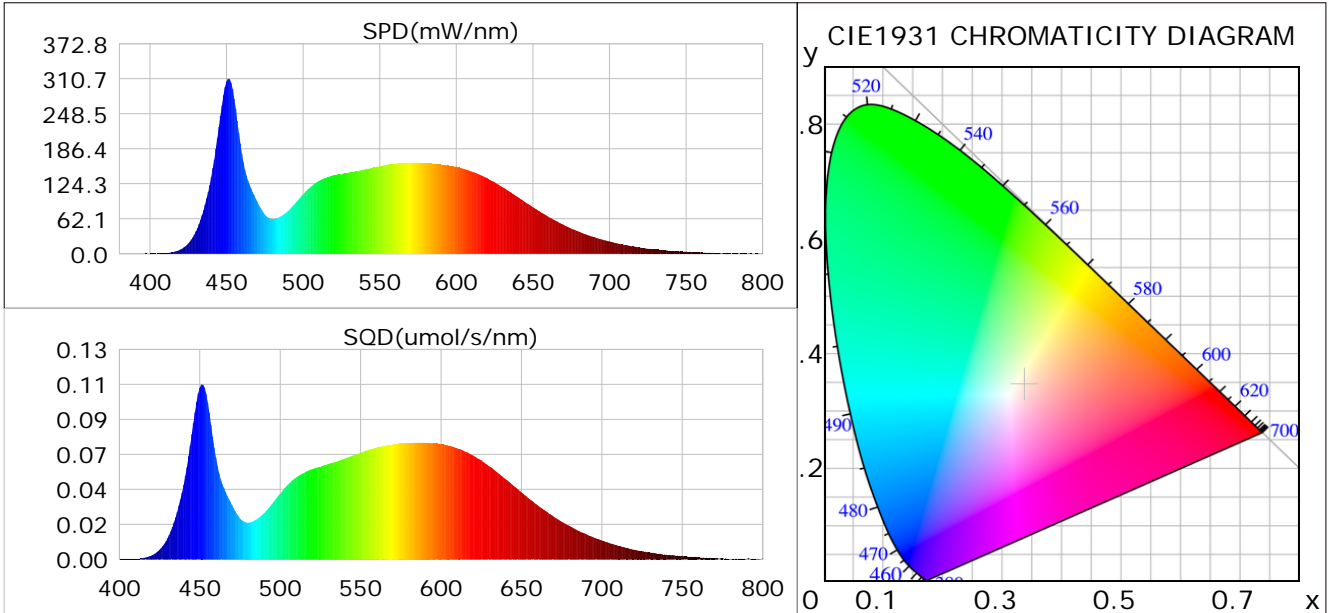
Condition: Tx: 14.2°C, Ti: 0.0°C, R.H.: 60%
 Test Lab:
 Operator: CRE

Test Device: Lisun LMS-9000B
 Test Time: 2021-02-12 09:45:16
 Inspector:

Plant optical param data

CIE Colorimetric Parameters

Chromaticity coordinates: $x=0.3373$ $y=0.3451$ $u(u')=0.2086$ $v=0.3202$ $v'=0.4803$
 CCT: $T_c=5298K$ ($duv=-0.00003$) Color Ratio: $R=0.157$ $G=0.797$ $B=0.047$
 Peak Wavelength: 451.4nm Half Bandwidth: 20.3nm
 Dominant Wavelength: 566.1nm Color Purity: 0.048
 CRI: $R_a=85.2$



Plant Optical Param

$ \mu_v(lm): 10492.00$	$Q_v(lm.s): 10492.00$
$ \mu_e, \dot{E}(W/nm): 33.50$	$Q_e(J): 33.50$
$ \mu_e(W): 32.94$	$ \mu_{fr}(W): 0.59$
$ \zeta_e: 0.39$	$ \zeta_{fr}: 0.01$
$PPE(umol/s/w): 1.81$	$K_{fr}: 0.04$
$Erb_Ratio: 0.89$	$PPF(umol/s): 150.64$
$PF_{uv}(360-400)(umol/s): 0.02$	$PPF(400-500)(umol/s): 36.58$
$PPF(500-600)(umol/s): 68.94$	$PPF(600-700)(umol/s): 45.12$
$PPF_{fr}(700-800)(umol/s): 3.45$	$PPF.t(umol): 150.64$
$ \mu_{ch-A.t}(J): 2.80$	$ \mu_{ch-A}(W): 2.80$
$ \mu_{ch-B.t}(J): 1.75$	$ \mu_{ch-B}(W): 1.75$
$ \mu_b.t(J): 9.53$	$ \mu_b(W): 9.53$
$ \mu_y.t(J): 15.03$	$ \mu_y(W): 15.03$
$ \mu_r.t(J): 8.64$	$ \mu_r(W): 8.64$

Electric Parameters

Voltage: 230.20V	Current: 0.3624A	Power: 83.42W
Power Factor: 0.9570	Frequency: 49.99Hz	

Condition: $T_x: 14.2^\circ C$, $T_i: 0.0^\circ C$, R.H.: 60%
 Test Lab:
 Operator: CRE

Test Device: Lisun LMS-9000B
 Test Time: 2021-02-12 09:45:16
 Inspector: