

Lightsource Test Report

Product Infomation

Product Category: LED-Lampen
 Product Spec: LED-SLG35-E40-080-NW
 Manufacturer: METOLIGHT
 Buyer: 3811

Product Type: LED-Strassenlampe
 Product Number: 1
 Submitted Unit: 103783

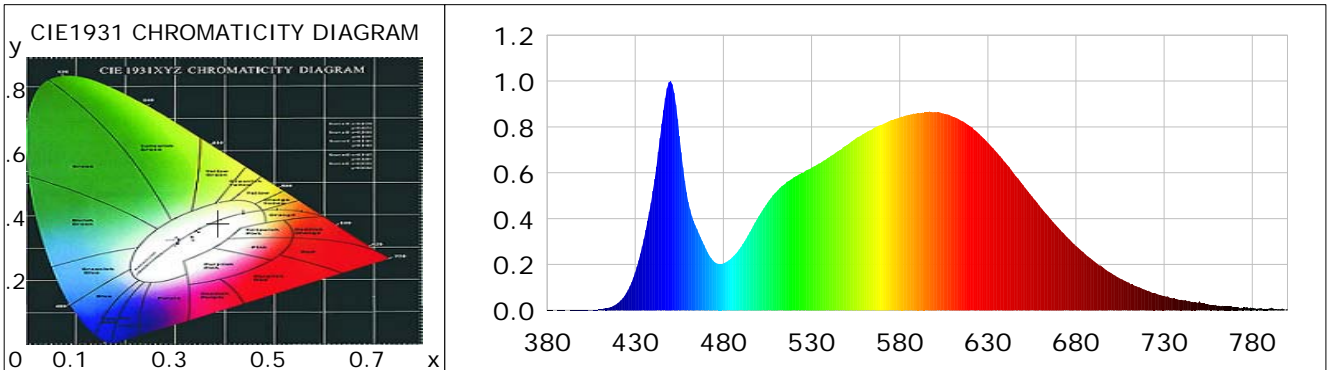
CIE Colorimetric Parameters

Chromaticity coordinates: $x=0.3869$ $y=0.3787$ $u(u')=0.2286$ $v=0.3356$ $v'=0.5034$
 CCT: $T_c=3843K$ ($duv=-0.00093$) Color Ratio: $R=0.191$ $G=0.777$ $B=0.032$
 Peak Wavelength: 449.8nm Half Bandwidth: 19.8nm
 Dominant Wavelength: 580.1nm Color Purity: 0.298
 CRI: $R_a=84.2$, $avgR(1\sim14)=78.4$, $avgR(1\sim15)=78.5$ TM30: $R_f=84$, $R_g=99$
 GAI: $GAI_BB_8=96.9$, $GAI_BB_15=102.4$, $GAI_EES=73.9$

R1 =83	R2 =89	R3 =92	R4 =84	R5 =83	R6 =84	R7 =88	R8 =71
R9 =25	R10=73	R11=83	R12=64	R13=84	R14=96	R15=79	

Color Quality Scale: $Q_a=83.9$, $Q_f=83.5$, $Q_p=85.3$, $Q_g=95.8$

Q1 =85	Q2 =98	Q3 =78	Q4 =77	Q5 =83	Q6 =84	Q7 =85	Q8 =90
Q9 =97	Q10=87	Q11=85	Q12=84	Q13=85	Q14=77	Q15=80	



Photometric Parameters

Luminous Flux: 10520 lm	Efficiency: 126.09 lm/W	Radiant Power: 32.934 W
Total mains efficacy: 148.29 lm/W	Energy Efficiency Class: D (EU 2019/2015)	
Pupil Flux: 15370.22 Plm	Pupil Lumens Per Watt: 184.23 Plm/W	Pupil Factor (Kp): 1.461
Cirtopic Flux: 30352.56 lm		

Electric Parameters

Voltage: 230.70V	Current: 0.3616A	Power: 83.43W
Power Factor: 0.9450	Frequency: 49.99Hz	

Test Infomation

Scan Range: 380~800:1nm	Photometric Method: sphere-spectroradiometer
Stabilization Time: 0 ms ALC.: 1.0000	Photometric Condition: Sphere diameter: 2.00m, 4PI
Max of Signal: 45807 (2773)	CCD Integration Time: 111.83 ms

Condition: Tx:24.5'C, Ti:0.0'C, R.H.:60%
 Test Lab:
 Operator: CRE

Test Device: Lisun LMS-9000B
 Test Time: 2021-02-16 11:08:18
 Inspector:

Lightsource Test Report

Product Information

Product Category: LED-Lampen
 Product Spec: LED-SLG35-E40-080-NW
 Manufacturer: METOLIGHT
 Buyer: 3811

Product Type: LED-Strassenlampe
 Product Number: 1
 Submitted Unit: 103783

WL(nm)	PL	PE(mW/nm)	WL(nm)	PL	PE(mW/nm)	WL(nm)	PL	PE(mW/nm)
380	0.0011	0.2354	525	0.5978	122.8141	670	0.3604	74.0396
385	0.0001	0.0135	530	0.6226	127.8962	675	0.3190	65.5285
390	0.0010	0.1973	535	0.6428	132.0521	680	0.2811	57.7526
395	0.0008	0.1625	540	0.6675	137.1274	685	0.2464	50.6220
400	0.0019	0.3871	545	0.6945	142.6781	690	0.2152	44.2198
405	0.0017	0.3539	550	0.7205	148.0128	695	0.1887	38.7659
410	0.0047	0.9590	555	0.7489	153.8454	700	0.1624	33.3570
415	0.0116	2.3855	560	0.7720	158.6008	705	0.1387	28.4914
420	0.0313	6.4308	565	0.7943	163.1751	710	0.1209	24.8414
425	0.0762	15.6498	570	0.8100	166.4047	715	0.1022	20.9960
430	0.1661	34.1300	575	0.8289	170.2872	720	0.0869	17.8555
435	0.3123	64.1655	580	0.8414	172.8501	725	0.0750	15.4176
440	0.5204	106.9113	585	0.8524	175.1185	730	0.0631	12.9602
445	0.8141	167.2446	590	0.8602	176.7085	735	0.0522	10.7288
450	1.0000	205.4356	595	0.8639	177.4832	740	0.0456	9.3661
455	0.7603	156.2006	600	0.8654	177.7758	745	0.0372	7.6514
460	0.4733	97.2299	605	0.8584	176.3439	750	0.0391	8.0400
465	0.3543	72.7776	610	0.8447	173.5379	755	0.0263	5.3993
470	0.2685	55.1558	615	0.8271	169.9247	760	0.0198	4.0667
475	0.2105	43.2373	620	0.8022	164.8013	765	0.0192	3.9427
480	0.2047	42.0526	625	0.7698	158.1534	770	0.0146	3.0059
485	0.2307	47.3845	630	0.7307	150.1178	775	0.0124	2.5436
490	0.2760	56.6967	635	0.6890	141.5520	780	0.0118	2.4295
495	0.3409	70.0341	640	0.6438	132.2631	785	0.0101	2.0801
500	0.4099	84.2070	645	0.5939	122.0144	790	0.0086	1.7567
505	0.4696	96.4649	650	0.5464	112.2508	795	0.0058	1.1838
510	0.5170	106.2157	655	0.4973	102.1562	800	0.0073	1.5046
515	0.5516	113.3260	660	0.4487	92.1758			
520	0.5804	119.2285	665	0.4029	82.7692			

Condition: Tx:24.5'C, Ti:0.0'C, R.H.:60%
 Test Lab:
 Operator: CRE

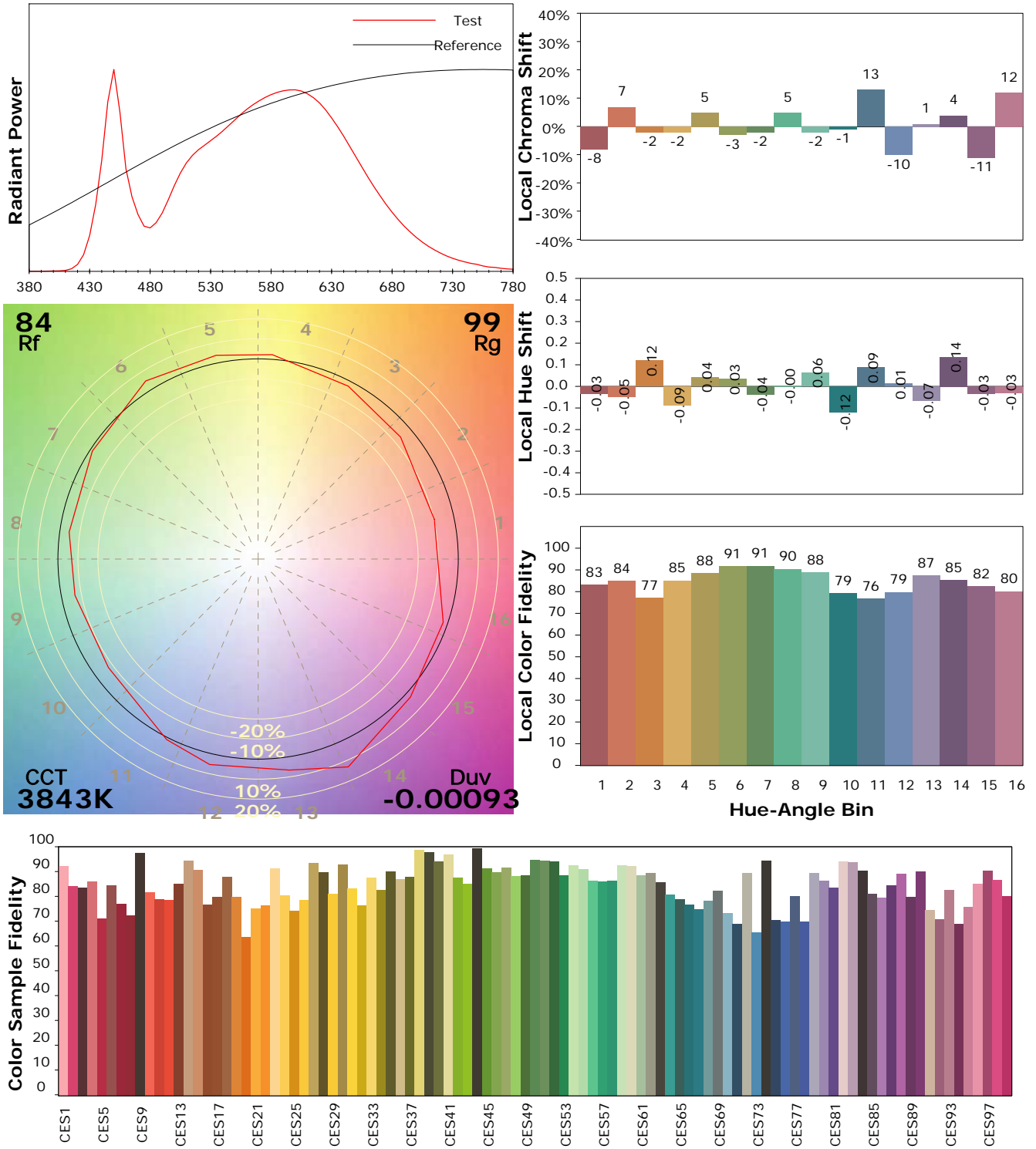
Test Device: Lisun LMS-9000B
 Test Time: 2021-02-16 11:08:18
 Inspector:

IES TM-30-18 Color Rendition Report

Product Information

Product Category: LED-Lampen
 Product Spec: LED-SLG35-E40-080-NW
 Manufacturer: METOLIGHT
 Buyer: 3811

Product Type: LED-Strassenlampe
 Product Number: 1
 Submitted Unit: 103783



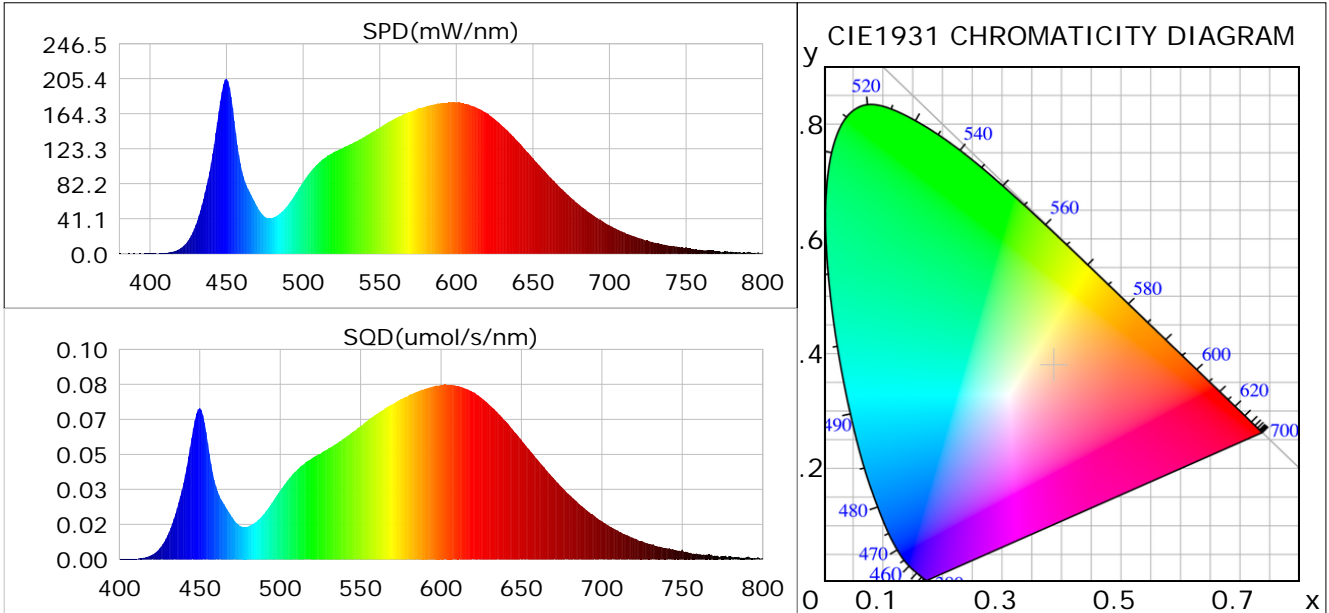
Condition: Tx:24.5°C, Ti:0.0°C, R.H.:60%
 Test Lab:
 Operator: CRE

Test Device: Lisun LMS-9000B
 Test Time: 2021-02-16 11:08:18
 Inspector:

Plant optical param data

CIE Colorimetric Parameters

Chromaticity coordinates: $x=0.3869$ $y=0.3787$ $u(u')=0.2286$ $v=0.3356$ $v'=0.5034$
 CCT: $T_c=3843K$ ($duv=-0.00093$) Color Ratio: $R=0.191$ $G=0.777$ $B=0.032$
 Peak Wavelength: 449.8nm Half Bandwidth: 19.8nm
 Dominant Wavelength: 580.1nm Color Purity: 0.298
 CRI: $R_a=84.2$



Plant Optical Param

$ \mu_v(lm): 10520.00$	$Q_v(lm.s): 10520.00$
$ \mu_e, \dot{E}(W/nm): 32.93$	$Q_e(J): 32.93$
$ \mu_e(W): 31.99$	$ \mu_{fr}(W): 1.00$
$ \zeta_e: 0.38$	$ \zeta_{fr}: 0.01$
$PPE(umol/s/w): 1.81$	$K_{fr}: 0.07$
$Erb_Ratio: 1.70$	$PPF(umol/s): 150.92$
$PF_{uv}(360-400)(umol/s): 0.02$	$PPF(400-500)(umol/s): 24.83$
$PPF(500-600)(umol/s): 67.41$	$PPF(600-700)(umol/s): 58.68$
$PPF_{fr}(700-800)(umol/s): 5.89$	$PPF.t(umol): 150.92$
$ \mu_{ch-A.t}(J): 2.73$	$ \mu_{ch-A}(W): 2.73$
$ \mu_{ch-B.t}(J): 1.43$	$ \mu_{ch-B}(W): 1.43$
$ \mu_b.t(J): 6.47$	$ \mu_b(W): 6.47$
$ \mu_y.t(J): 14.60$	$ \mu_y(W): 14.60$
$ \mu_r.t(J): 11.18$	$ \mu_r(W): 11.18$

Electric Parameters

Voltage: 230.70V	Current: 0.3616A	Power: 83.43W
Power Factor: 0.9450	Frequency: 49.99Hz	

Condition: $T_x:24.5^\circ C$, $T_i:0.0^\circ C$, R.H.:60%
 Test Lab:
 Operator: CRE

Test Device: Lisun LMS-9000B
 Test Time: 2021-02-16 11:08:18
 Inspector: