

Lightsource Test Report

Product Information

Product Category: LED-Lampen
 Product Spec: LED-E27-G55-5W-DWM-dim
 Manufacturer: METOLIGHT
 Buyer: 3127
 Product Type: LED-Lampen-E27
 Product Number: 1
 Submitted Unit: 103319

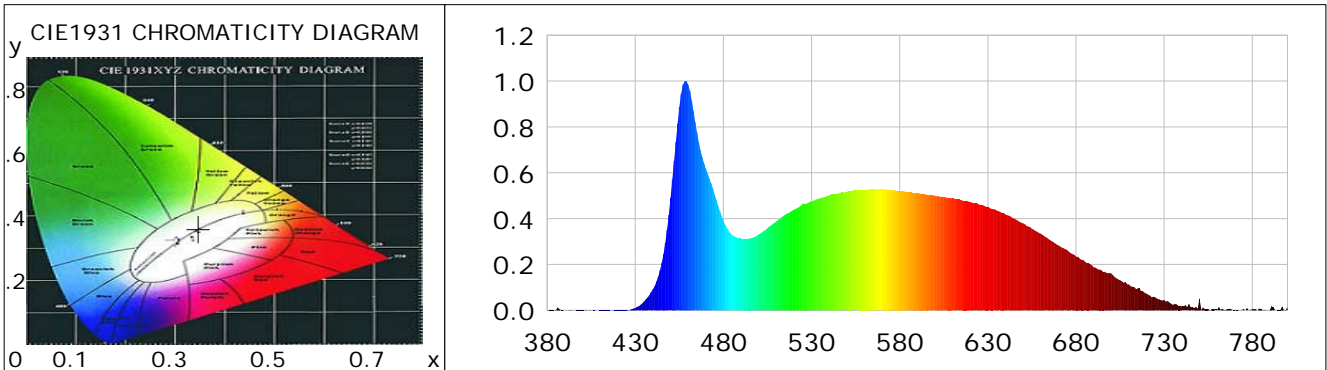
CIE Colorimetric Parameters

Chromaticity coordinates: $x=0.3472$ $y=0.3604$ $u(u')=0.2094$ $v=0.3261$ $v'=0.4892$
 CCT: $T_c=4954K$ ($duv=0.00355$) Color Ratio: $R=0.167$ $G=0.775$ $B=0.058$
 Peak Wavelength: 458.6nm Half Bandwidth: 25.1nm
 Dominant Wavelength: 570.2nm Color Purity: 0.123
 CRI: $R_a=88.6$, $avgR(1\sim14)=84.7$, $avgR(1\sim15)=84.8$ TM30: $R_f=82$, $R_g=91$
 GAI: $GAI_BB_8=88.3$, $GAI_BB_15=96.4$, $GAI_EES=80.1$

R1 =90	R2 =98	R3 =96	R4 =80	R5 =86	R6 =93	R7 =87	R8 =80
R9 =57	R10=92	R11=80	R12=56	R13=93	R14=98	R15=86	

Color Quality Scale: $Q_a=85.9$, $Q_f=86.0$, $Q_p=84.7$, $Q_g=91.5$

Q1 =80	Q2 =91	Q3 =88	Q4 =77	Q5 =77	Q6 =77	Q7 =85	Q8 =91
Q9 =96	Q10=96	Q11=94	Q12=94	Q13=93	Q14=88	Q15=87	



Photometric Parameters

Luminous Flux: 429.12 lm Efficiency: 83.98 lm/W Radiant Power: 1.442 W
 Total mains efficacy: 83.98 lm/W Energy Efficiency Class: G (EU 2019/2015)
 Pupil Flux: 761.54 Plm Pupil Lumens Per Watt: 149.03 Plm/W Pupil Factor (Kp): 1.775
 Circopic Flux: 1724.18 lm

Electric Parameters

Voltage: 230.70V Current: 0.0270A Power: 5.11W
 Power Factor: 0.8010 Frequency: 49.99Hz

Test Information

Scan Range: 380~800:1nm Photometric Method: sphere-spectroradiometer
 Stabilization Time: 0 ms ALC.: 1.0000 Photometric Condition: Sphere diameter: 2.00m, 4PI
 Max of Signal: 46794 (2929) CCD Integration Time: 583.45 ms

Lightsource Test Report

Product Information

Product Category: LED-Lampen
 Product Spec: LED-E27-G55-5W-DWM-dim
 Manufacturer: METOLIGHT
 Buyer: 3127

Product Type: LED-Lampen-E27
 Product Number: 1
 Submitted Unit: 103319

WL(nm)	PL	PE(mW/nm)	WL(nm)	PL	PE(mW/nm)	WL(nm)	PL	PE(mW/nm)
380	0.0007	0.0089	525	0.4661	5.6862	670	0.2839	3.4632
385	0.0022	0.0270	530	0.4765	5.8132	675	0.2628	3.2061
390	0.0011	0.0138	535	0.4896	5.9734	680	0.2347	2.8640
395	0.0004	0.0049	540	0.5022	6.1272	685	0.2128	2.5961
400	0.0017	0.0207	545	0.5095	6.2161	690	0.1879	2.2921
405	0.0002	0.0023	550	0.5178	6.3174	695	0.1691	2.0629
410	0.0007	0.0089	555	0.5227	6.3778	700	0.1606	1.9590
415	0.0016	0.0199	560	0.5266	6.4250	705	0.1307	1.5949
420	0.0021	0.0253	565	0.5288	6.4515	710	0.1125	1.3726
425	0.0014	0.0175	570	0.5283	6.4462	715	0.0951	1.1606
430	0.0103	0.1259	575	0.5255	6.4114	720	0.0721	0.8801
435	0.0386	0.4712	580	0.5205	6.3508	725	0.0572	0.6983
440	0.0917	1.1192	585	0.5151	6.2845	730	0.0453	0.5523
445	0.2075	2.5317	590	0.5096	6.2177	735	0.0242	0.2950
450	0.4908	5.9878	595	0.5040	6.1496	740	0.0171	0.2086
455	0.8877	10.8310	600	0.4998	6.0974	745	0.0135	0.1652
460	0.9842	12.0075	605	0.4944	6.0323	750	0.0503	0.6134
465	0.7749	9.4541	610	0.4878	5.9521	755	0.0060	0.0737
470	0.6184	7.5453	615	0.4815	5.8742	760	0.0040	0.0494
475	0.5052	6.1632	620	0.4729	5.7691	765	0.0041	0.0501
480	0.3904	4.7632	625	0.4621	5.6381	770	0.0009	0.0108
485	0.3284	4.0070	630	0.4519	5.5129	775	0.0053	0.0648
490	0.3137	3.8268	635	0.4357	5.3162	780	0.0043	0.0525
495	0.3135	3.8245	640	0.4179	5.0986	785	0.0066	0.0810
500	0.3310	4.0390	645	0.4000	4.8803	790	0.0023	0.0275
505	0.3584	4.3730	650	0.3793	4.6273	795	0.0015	0.0181
510	0.3875	4.7279	655	0.3558	4.3413	800	0.0133	0.1626
515	0.4174	5.0921	660	0.3351	4.0879			
520	0.4387	5.3523	665	0.3073	3.7494			

Condition: Tx:0.0°C, Ti:0.0°C, R.H.:60%
 Test Lab:
 Operator: CRE

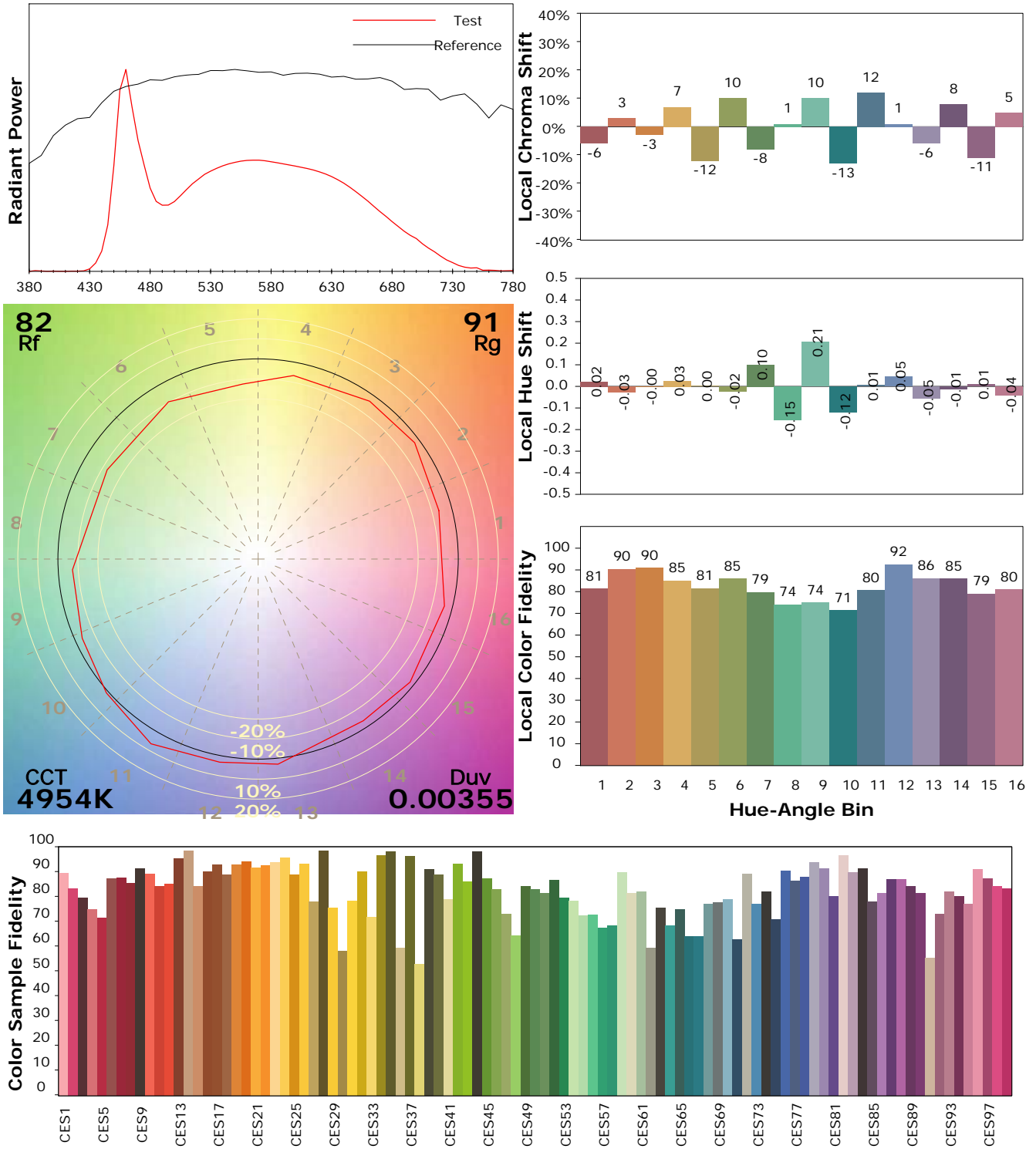
Test Device: Lisun LMS-9000B
 Test Time: 2021-04-28 14:41:46
 Inspector:

IES TM-30-18 Color Rendition Report

Product Information

Product Category: LED-Lampen
 Product Spec: LED-E27-G55-5W-DWM-dim
 Manufacturer: METOLIGHT
 Buyer: 3127

Product Type: LED-Lampen-E27
 Product Number: 1
 Submitted Unit: 103319



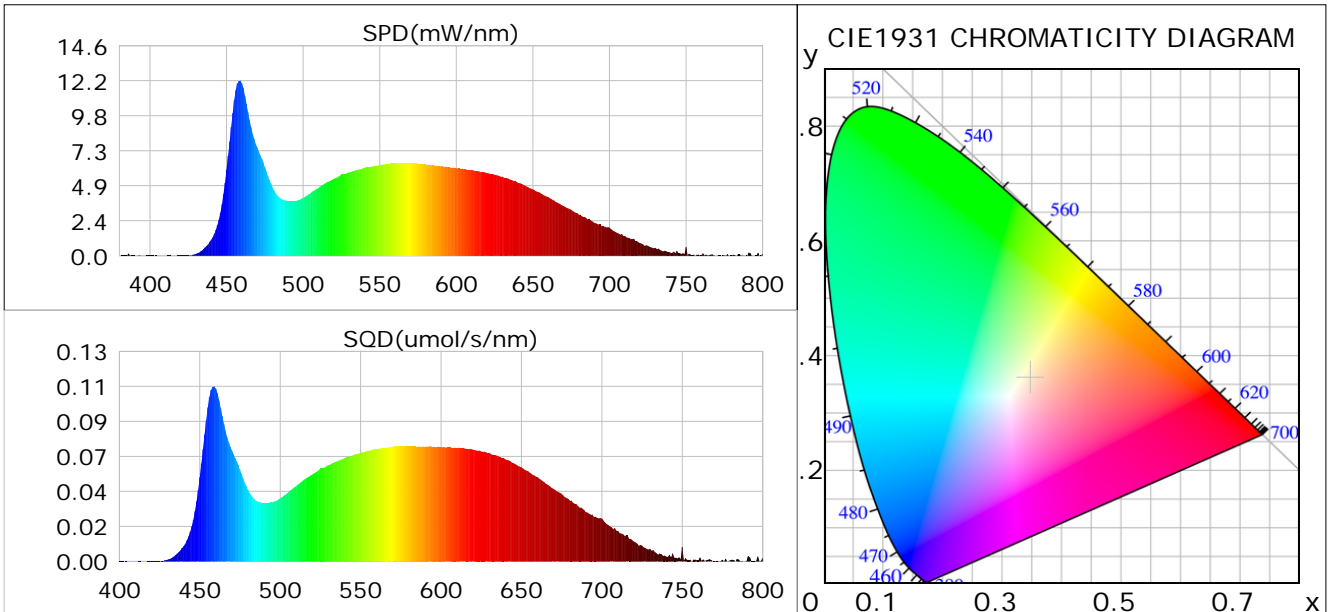
Condition: Tx:0.0°C, Ti:0.0°C, R.H.: 60%
 Test Lab:
 Operator: CRE

Test Device: Lisun LMS-9000B
 Test Time: 2021-04-28 14:41:46
 Inspector:

Plant optical param data

CIE Colorimetric Parameters

Chromaticity coordinates: $x=0.3472$ $y=0.3604$ $u(u')=0.2094$ $v=0.3261$ $v'=0.4892$
 CCT: $T_c=4954K$ ($duv=0.00355$) Color Ratio: $R=0.167$ $G=0.775$ $B=0.058$
 Peak Wavelength: 458.6nm Half Bandwidth: 25.1nm
 Dominant Wavelength: 570.2nm Color Purity: 0.123
 CRI: $R_a=88.6$



Plant Optical Param

$ \mu_v(lm): 429.12$	$Q_v(lm.s): 429.12$
$ \mu_e, \dot{E}(W/nm): 1.44$	$Q_e(J): 1.44$
$ \mu_e(W): 1.40$	$ \mu_{fr}(W): 0.04$
$ \dot{C}_e: 0.27$	$ \dot{C}_{fr}: 0.01$
$PPE(umol/s/w): 1.28$	$K_{fr}: 0.05$
$Erb_Ratio: 1.16$	$PPF(umol/s): 6.53$
$PF_{uv}(360-400)(umol/s): 0.00$	$PPF(400-500)(umol/s): 1.47$
$PPF(500-600)(umol/s): 2.73$	$PPF(600-700)(umol/s): 2.33$
$PPF_{fr}(700-800)(umol/s): 0.25$	$PPF.t(umol): 6.53$
$ \mu_{ch-A.t}(J): 0.11$	$ \mu_{ch-A}(W): 0.11$
$ \mu_{ch-B.t}(J): 0.08$	$ \mu_{ch-B}(W): 0.08$
$ \mu_b.t(J): 0.38$	$ \mu_b(W): 0.38$
$ \mu_y.t(J): 0.59$	$ \mu_y(W): 0.59$
$ \mu_r.t(J): 0.44$	$ \mu_r(W): 0.44$

Electric Parameters

Voltage: 230.70V	Current: 0.0270A	Power: 5.11W
Power Factor: 0.8010	Frequency: 49.99Hz	

Condition: $T_x:0.0^\circ C$, $T_i:0.0^\circ C$, R.H.: 60%
 Test Lab:
 Operator: CRE

Test Device: Lisun LMS-9000B
 Test Time: 2021-04-28 14:41:46
 Inspector: