

Lightsource Test Report

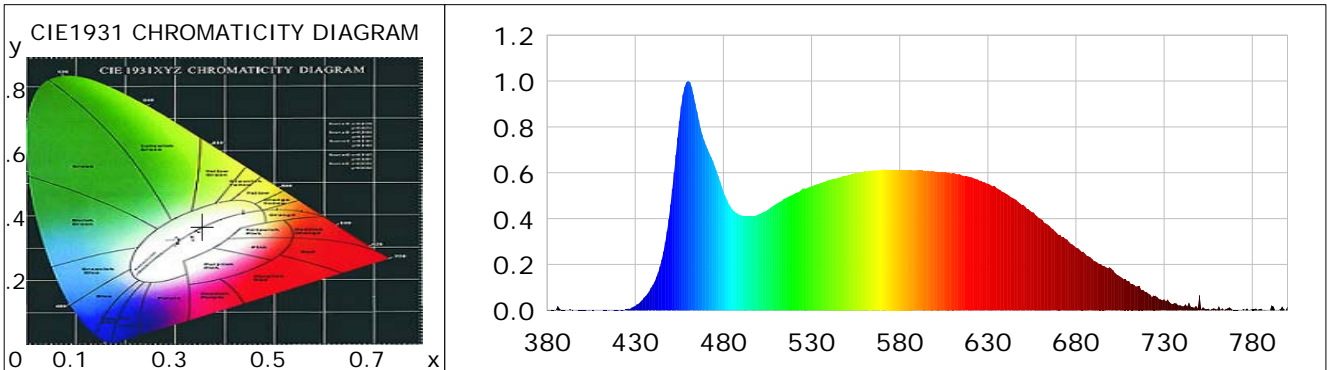
Product Information

Product Category: LED-Lampen
 Product Spec: LED-E27-G55-5W-DWC-dim
 Manufacturer: METOLIGHT
 Buyer: 3127

Product Type: LED-Lampen-E27
 Product Number: 1
 Submitted Unit: 103318

CIE Colorimetric Parameters

Chromaticity coordinates: $x=0.3553$ $y=0.3683$ $u(u')=0.2118$ $v=0.3294$ $v'=0.4941$
 CCT: $T_c=4706K$ ($duv=0.00427$) Color Ratio: $R=0.174$ $G=0.766$ $B=0.059$
 Peak Wavelength: 460.0nm Half Bandwidth: 30.4nm
 Dominant Wavelength: 572.5nm Color Purity: 0.172
 CRI: $R_a=88.9$, $avgR(1\sim14)=85.9$, $avgR(1\sim15)=86.0$ TM30: $R_f=82$, $R_g=90$
 GAI: $GAI_BB_8=86.9$, $GAI_BB_15=94.7$, $GAI_EES=76.7$
 R1 =92 R2 =98 R3 =94 R4 =80 R5 =87 R6 =96 R7 =85 R8 =79
 R9 =60 R10=96 R11=81 R12=62 R13=95 R14=97 R15=87
 Color Quality Scale: $Q_a=86.6$, $Q_f=86.8$, $Q_p=85.4$, $Q_g=90.8$
 Q1 =79 Q2 =88 Q3 =93 Q4 =82 Q5 =79 Q6 =78 Q7 =84 Q8 =89
 Q9 =92 Q10=93 Q11=97 Q12=96 Q13=95 Q14=89 Q15=87



Photometric Parameters

Luminous Flux: 365.29 lm Efficiency: 75.94 lm/W Radiant Power: 1.222 W
 Total mains efficacy: 75.94 lm/W Energy Efficiency Class: G (EU 2019/2015)
 Pupil Flux: 642.94 Plm Pupil Lumens Per Watt: 133.67 Plm/W Pupil Factor (Kp): 1.760
 Circopic Flux: 1450.69 lm

Electric Parameters

Voltage: 230.80V Current: 0.0250A Power: 4.81W
 Power Factor: 0.8050 Frequency: 49.99Hz

Test Information

Scan Range: 380~800:1nm Photometric Method: sphere-spectroradiometer
 Stabilization Time: 0 ms ALC.: 1.0000 Photometric Condition: Sphere diameter: 2.00m, 4PI
 Max of Signal: 46684 (3070) CCD Integration Time: 801.50 ms

Lightsource Test Report

Product Information

Product Category: LED-Lampen
 Product Spec: LED-E27-G55-5W-DWC-dim
 Manufacturer: METOLIGHT
 Buyer: 3127

Product Type: LED-Lampen-E27
 Product Number: 1
 Submitted Unit: 103318

WL(nm)	PL	PE(mW/nm)	WL(nm)	PL	PE(mW/nm)	WL(nm)	PL	PE(mW/nm)
380	0.0016	0.0138	525	0.5321	4.7131	670	0.3294	2.9180
385	0.0029	0.0260	530	0.5407	4.7892	675	0.3086	2.7337
390	0.0026	0.0230	535	0.5551	4.9173	680	0.2738	2.4251
395	0.0003	0.0026	540	0.5683	5.0342	685	0.2474	2.1918
400	0.0020	0.0178	545	0.5792	5.1301	690	0.2159	1.9123
405	0.0002	0.0021	550	0.5879	5.2071	695	0.1943	1.7211
410	0.0012	0.0105	555	0.5977	5.2942	700	0.1828	1.6189
415	0.0024	0.0209	560	0.6057	5.3650	705	0.1474	1.3055
420	0.0032	0.0279	565	0.6102	5.4049	710	0.1277	1.1310
425	0.0035	0.0311	570	0.6121	5.4222	715	0.1058	0.9374
430	0.0194	0.1722	575	0.6133	5.4321	720	0.0802	0.7108
435	0.0555	0.4918	580	0.6136	5.4349	725	0.0640	0.5665
440	0.1109	0.9822	585	0.6109	5.4115	730	0.0476	0.4215
445	0.2214	1.9615	590	0.6100	5.4031	735	0.0285	0.2523
450	0.4614	4.0865	595	0.6066	5.3735	740	0.0189	0.1674
455	0.8255	7.3117	600	0.6058	5.3663	745	0.0171	0.1518
460	1.0000	8.8577	605	0.6019	5.3316	750	0.0660	0.5844
465	0.8676	7.6847	610	0.5985	5.3016	755	0.0073	0.0648
470	0.7216	6.3913	615	0.5897	5.2233	760	0.0036	0.0322
475	0.6299	5.5798	620	0.5817	5.1524	765	0.0058	0.0514
480	0.5183	4.5911	625	0.5662	5.0155	770	0.0016	0.0143
485	0.4411	3.9069	630	0.5528	4.8964	775	0.0052	0.0465
490	0.4146	3.6722	635	0.5328	4.7197	780	0.0050	0.0446
495	0.4103	3.6343	640	0.5096	4.5140	785	0.0072	0.0639
500	0.4189	3.7109	645	0.4870	4.3139	790	0.0007	0.0065
505	0.4375	3.8756	650	0.4603	4.0768	795	0.0023	0.0203
510	0.4645	4.1148	655	0.4285	3.7954	800	0.0175	0.1554
515	0.4880	4.3226	660	0.3991	3.5350			
520	0.5062	4.4835	665	0.3675	3.2552			

Condition: Tx:0.0°C, Ti:0.0°C, R.H.:60%
 Test Lab:
 Operator: CRE

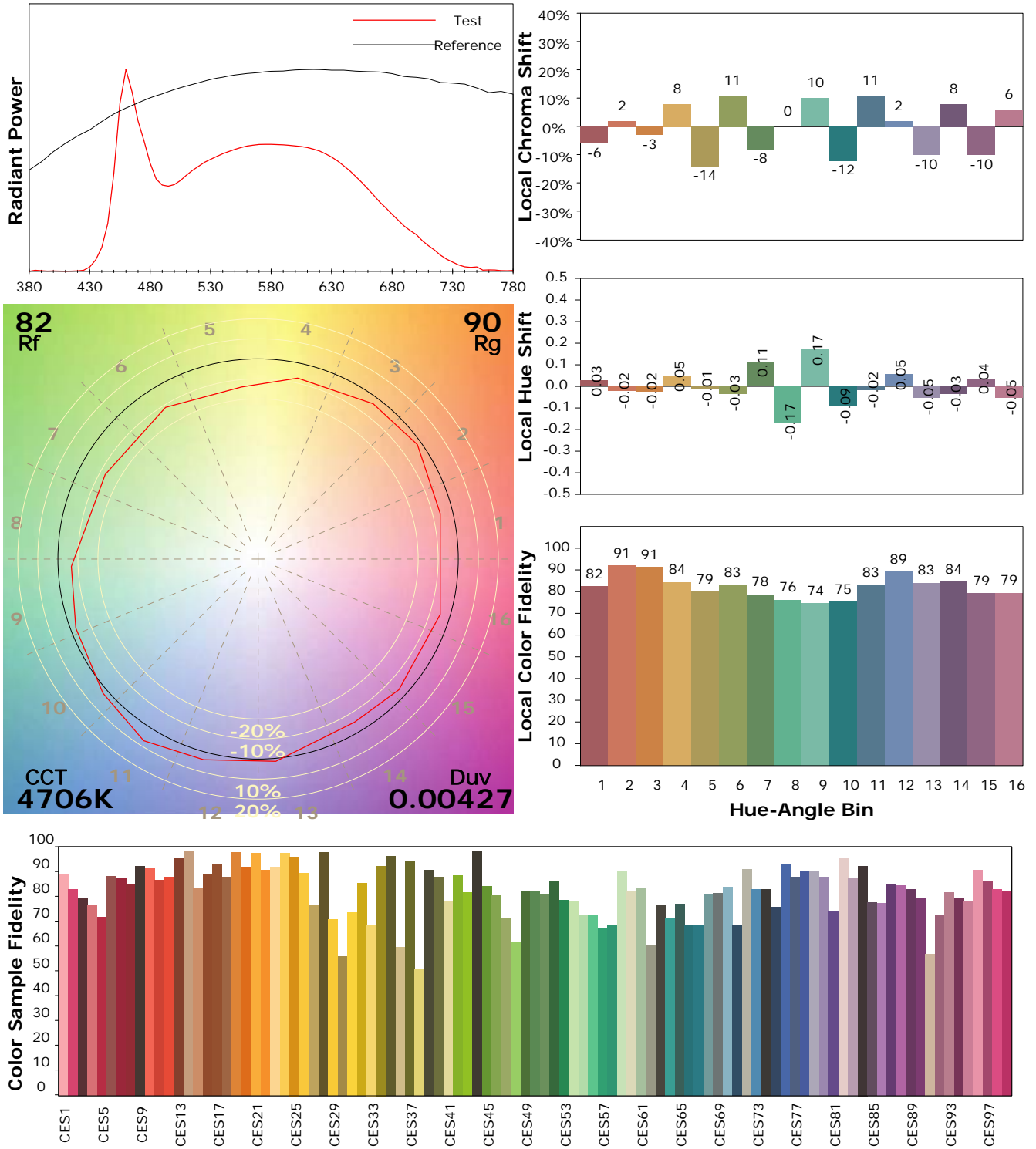
Test Device: Lisun LMS-9000B
 Test Time: 2021-04-28 14:28:42
 Inspector:

IES TM-30-18 Color Rendition Report

Product Information

Product Category: LED-Lampen
 Product Spec: LED-E27-G55-5W-DWC-dim
 Manufacturer: METOLIGHT
 Buyer: 3127

Product Type: LED-Lampen-E27
 Product Number: 1
 Submitted Unit: 103318



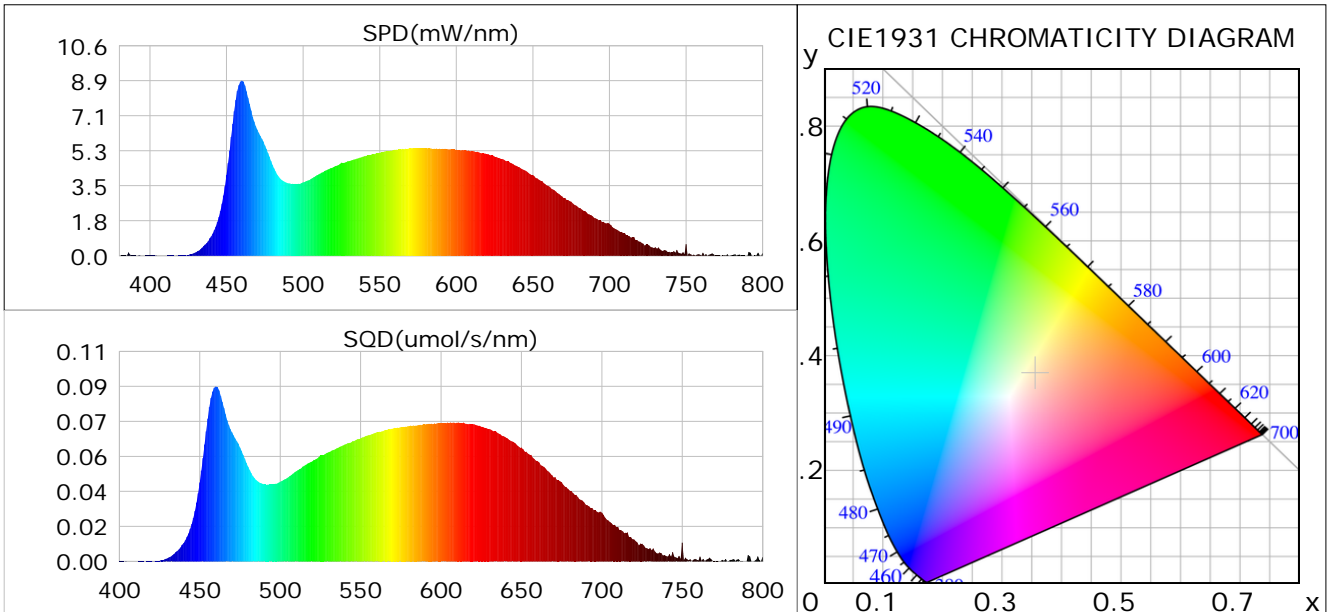
Condition: Tx:0.0°C, Ti:0.0°C, R.H.: 60%
 Test Lab:
 Operator: CRE

Test Device: Lisun LMS-9000B
 Test Time: 2021-04-28 14:28:42
 Inspector:

Plant optical param data

CIE Colorimetric Parameters

Chromaticity coordinates: $x=0.3553$ $y=0.3683$ $u(u')=0.2118$ $v=0.3294$ $v'=0.4941$
 CCT: $T_c=4706K$ ($duv=0.00427$) Color Ratio: $R=0.174$ $G=0.766$ $B=0.059$
 Peak Wavelength: 460.0nm Half Bandwidth: 30.4nm
 Dominant Wavelength: 572.5nm Color Purity: 0.172
 CRI: $R_a=88.9$



Plant Optical Param

$ \mu_v(lm)$: 365.29	$Q_v(lm.s)$: 365.29
$ \mu_e, \dot{E}(W/nm)$: 1.22	$Q_e(J)$: 1.22
$ \mu_e(W)$: 1.19	$ \mu_{fr}(W)$: 0.04
$ \zeta_e$: 0.25	$ \zeta_{fr}$: 0.01
PPE(umol/s/w): 1.16	Kfr: 0.04
Erb_Ratio: 1.24	PPF(umol/s): 5.56
PFuv(360-400)(umol/s): 0.00	PPF(400-500)(umol/s): 1.21
PPF(500-600)(umol/s): 2.31	PPF(600-700)(umol/s): 2.04
PPfr(700-800)(umol/s): 0.21	PPF.t(umol): 5.56
$ \mu_{ch-A.t}(J)$: 0.09	$ \mu_{ch-A}(W)$: 0.09
$ \mu_{ch-B.t}(J)$: 0.06	$ \mu_{ch-B}(W)$: 0.06
$ \mu_b.t(J)$: 0.31	$ \mu_b(W)$: 0.31
$ \mu_y.t(J)$: 0.50	$ \mu_y(W)$: 0.50
$ \mu_r.t(J)$: 0.39	$ \mu_r(W)$: 0.39

Electric Parameters

Voltage: 230.80V	Current: 0.0250A	Power: 4.81W
Power Factor: 0.8050	Frequency: 49.99Hz	

Condition: Tx:0.0°C, Ti:0.0°C, R.H.:60%
 Test Lab:
 Operator: CRE

Test Device: Lisun LMS-9000B
 Test Time: 2021-04-28 14:28:42
 Inspector: