

Lightsource Test Report

Product Information

Product Category: LED-Lampen
 Product Spec: LED-SLG28-Plus-E27-27-360-NWM
 Manufacturer: METOLIGHT
 Buyer: 3811

Product Type: LED-Strassenlampen
 Product Number: 1
 Submitted Unit: 101219

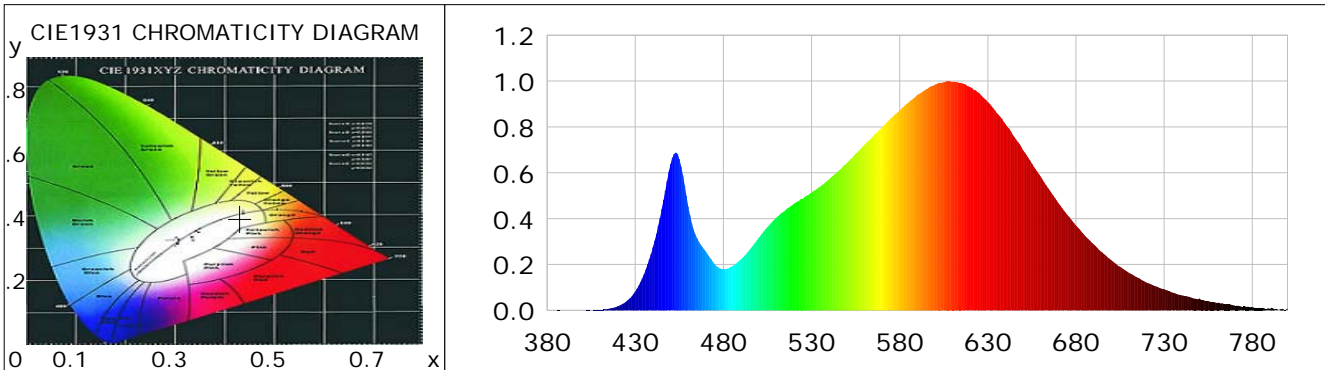
CIE Colorimetric Parameters

Chromaticity coordinates: $x=0.4309$ $y=0.3925$ $u(u')=0.2517$ $v=0.3439$ $v'=0.5158$
 CCT: $T_c=3007K$ ($duv=-0.00387$) Color Ratio: $R=0.234$ $G=0.740$ $B=0.026$
 Peak Wavelength: 607.5nm Half Bandwidth: 140.0nm
 Dominant Wavelength: 584.3nm Color Purity: 0.471
 CRI: $R_a=85.1$, $avgR(1\sim14)=80.6$, $avgR(1\sim15)=80.5$ TM30: $R_f=85$, $R_g=99$
 GAI: $GAI_BB_8=106.3$, $GAI_BB_15=112.3$, $GAI_EES=61.2$

R1 =84	R2 =92	R3 =96	R4 =83	R5 =84	R6 =90	R7 =84	R8 =67
R9 =27	R10=81	R11=82	R12=73	R13=86	R14=98	R15=80	

Color Quality Scale: $Q_a=83.0$, $Q_f=83.3$, $Q_p=87.3$, $Q_g=96.0$

Q1 =82	Q2 =97	Q3 =80	Q4 =78	Q5 =83	Q6 =84	Q7 =82	Q8 =85
Q9 =96	Q10=88	Q11=84	Q12=82	Q13=83	Q14=78	Q15=79	



Photometric Parameters

Luminous Flux: 2929.8 lm	Efficiency: 107.75 lm/W	Radiant Power: 9.441 W
Total mains efficacy: 107.75 lm/W	Energy Efficiency Class: F (EU 2019/2015)	
Pupil Flux: 3738.31 Plm	Pupil Lumens Per Watt: 137.49 Plm/W	Pupil Factor (Kp): 1.276
Cirtpic Flux: 6924.10 lm		

Electric Parameters

Voltage: 230.90V	Current: 0.1240A	Power: 27.19W
Power Factor: 0.9400	Frequency: 49.99Hz	

Test Information

Scan Range: 380~800:1nm	Photometric Method: sphere-spectroradiometer
Stabilization Time: 0 ms ALC.: 1.0000	Photometric Condition: Sphere diameter: 2.00m, 4PI
Max of Signal: 45695 (2597)	CCD Integration Time: 106.61 ms

Condition: Tx:22.7'C, Ti:0.0'C, R.H.:60%
 Test Lab:
 Operator: CRE

Test Device: Lisun LMS-9000B
 Test Time: 2021-02-12 11:57:48
 Inspector:

Lightsource Test Report

Product Information

Product Category: LED-Lampen

Product Spec: LED-SLG28-Plus-E27-27-360-NWM

Manufacturer: METOLIGHT

Buyer: 3811

Product Type: LED-Strassenlampen

Product Number: 1

Submitted Unit: 101219

WL(nm)	PL	PE(mW/nm)	WL(nm)	PL	PE(mW/nm)	WL(nm)	PL	PE(mW/nm)
380	0.0005	0.0276	525	0.4864	28.2869	670	0.4682	27.2279
385	0.0007	0.0399	530	0.5139	29.8813	675	0.4180	24.3055
390	0.0006	0.0355	535	0.5403	31.4197	680	0.3704	21.5415
395	0.0003	0.0160	540	0.5713	33.2207	685	0.3259	18.9537
400	0.0007	0.0382	545	0.6059	35.2313	690	0.2877	16.7325
405	0.0006	0.0342	550	0.6419	37.3252	695	0.2516	14.6292
410	0.0023	0.1359	555	0.6833	39.7334	700	0.2187	12.7195
415	0.0072	0.4168	560	0.7220	41.9868	705	0.1901	11.0542
420	0.0175	1.0191	565	0.7599	44.1910	710	0.1637	9.5200
425	0.0395	2.2960	570	0.7983	46.4221	715	0.1427	8.2965
430	0.0823	4.7880	575	0.8378	48.7196	720	0.1208	7.0243
435	0.1576	9.1625	580	0.8724	50.7293	725	0.1060	6.1662
440	0.2750	15.9935	585	0.9055	52.6577	730	0.0924	5.3714
445	0.4427	25.7461	590	0.9400	54.6645	735	0.0773	4.4941
450	0.6385	37.1286	595	0.9642	56.0718	740	0.0650	3.7805
455	0.6598	38.3690	600	0.9843	57.2392	745	0.0565	3.2884
460	0.4536	26.3794	605	0.9952	57.8707	750	0.0519	3.0183
465	0.3152	18.3267	610	0.9971	57.9833	755	0.0409	2.3779
470	0.2565	14.9179	615	0.9908	57.6154	760	0.0331	1.9277
475	0.2018	11.7342	620	0.9738	56.6277	765	0.0279	1.6213
480	0.1789	10.4014	625	0.9481	55.1328	770	0.0206	1.2000
485	0.1921	11.1709	630	0.9082	52.8116	775	0.0170	0.9907
490	0.2222	12.9215	635	0.8614	50.0897	780	0.0153	0.8900
495	0.2656	15.4454	640	0.8122	47.2307	785	0.0099	0.5777
500	0.3160	18.3759	645	0.7573	44.0390	790	0.0068	0.3950
505	0.3639	21.1622	650	0.6976	40.5680	795	0.0026	0.1537
510	0.4043	23.5116	655	0.6398	37.2038	800	0.0086	0.5030
515	0.4354	25.3182	660	0.5829	33.8971			
520	0.4651	27.0481	665	0.5245	30.5017			

Condition: Tx:22.7'C, Ti:0.0'C, R.H.:60%
 Test Lab:
 Operator: CRE

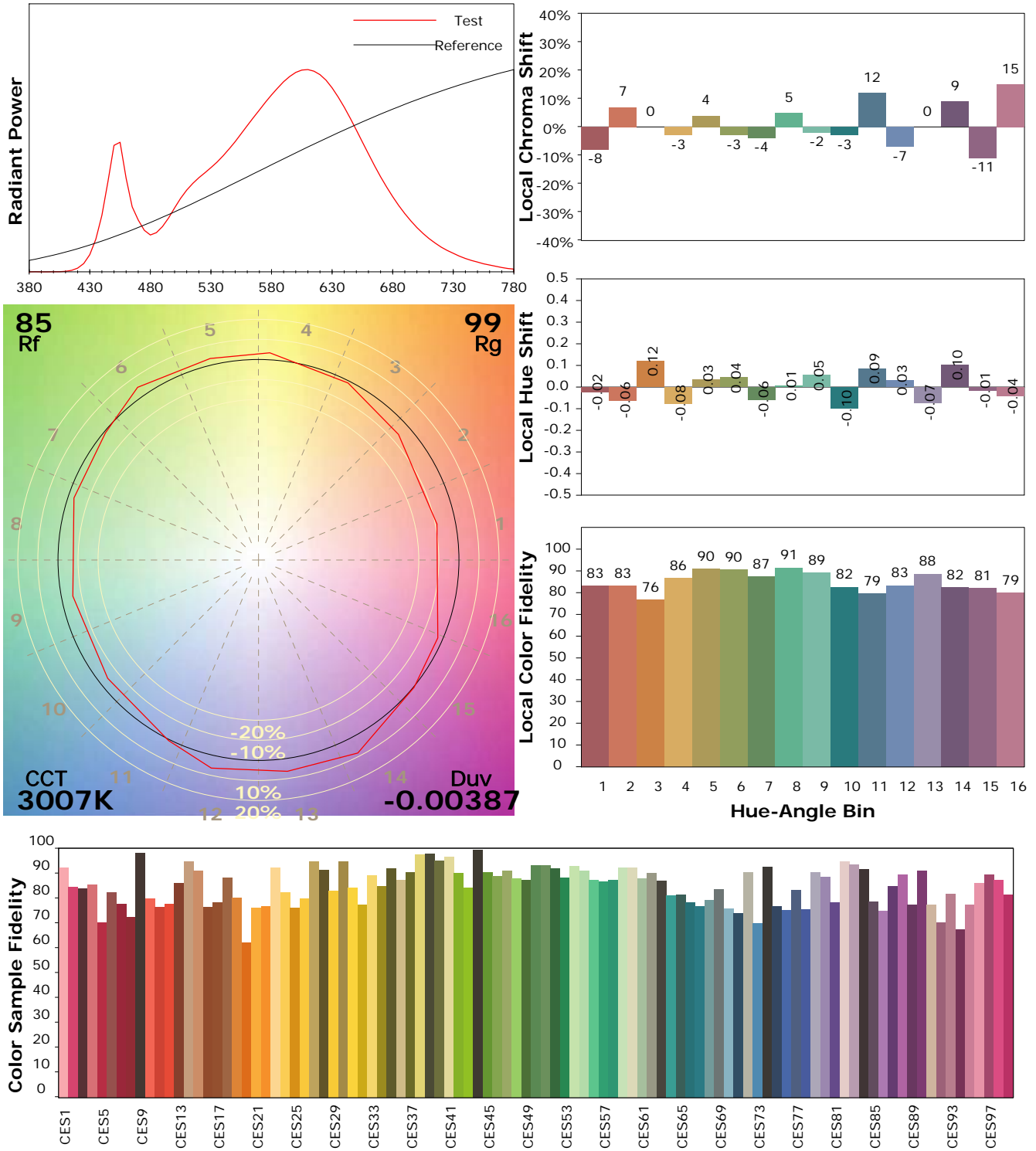
Test Device: Lisun LMS-9000B
 Test Time: 2021-02-12 11:57:48
 Inspector:

IES TM-30-18 Color Rendition Report

Product Information

Product Category: LED-Lampen
 Product Spec: LED-SLG28-Plus-E27-27-360-NWM
 Manufacturer: METOLIGHT
 Buyer: 3811

Product Type: LED-Strassenlampen
 Product Number: 1
 Submitted Unit: 101219



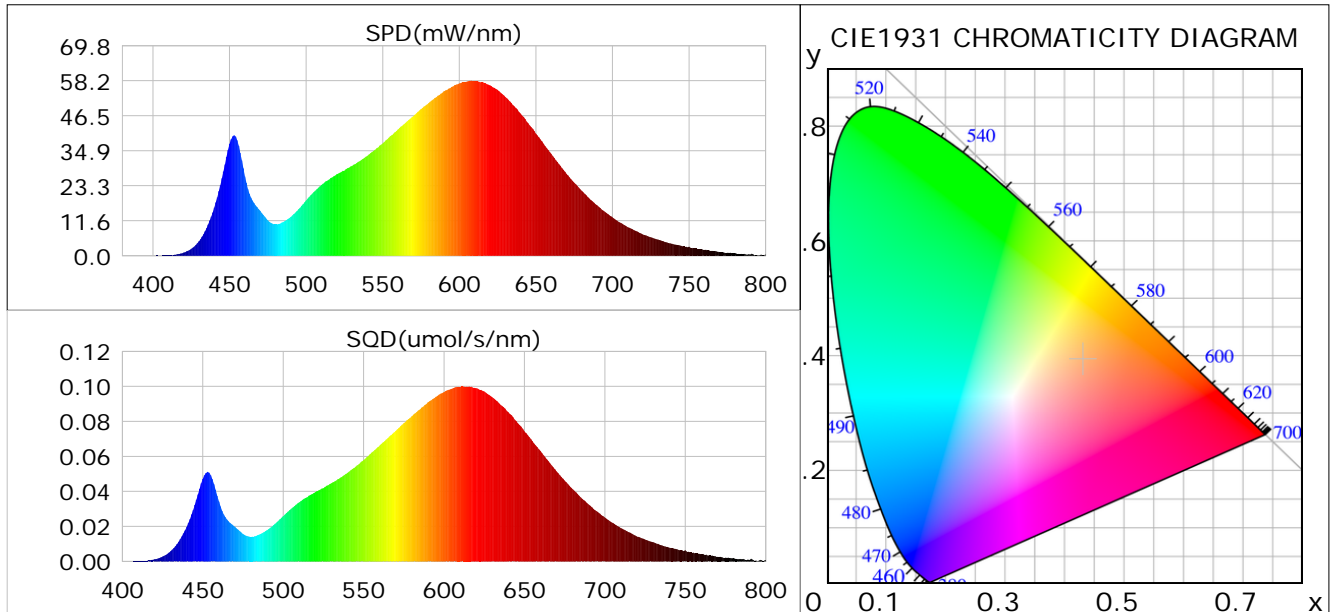
Condition: Tx: 22.7°C, Ti: 0.0°C, R.H.: 60%
 Test Lab:
 Operator: CRE

Test Device: Lisun LMS-9000B
 Test Time: 2021-02-12 11:57:48
 Inspector:

Plant optical param data

CIE Colorimetric Parameters

Chromaticity coordinates: $x=0.4309$ $y=0.3925$ $u(u')=0.2517$ $v=0.3439$ $v'=0.5158$
 CCT: $T_c=3007K$ ($duv=-0.00387$) Color Ratio: $R=0.234$ $G=0.740$ $B=0.026$
 Peak Wavelength: 607.5nm Half Bandwidth: 140.0nm
 Dominant Wavelength: 584.3nm Color Purity: 0.471
 CRI: Ra= 85.1



Plant Optical Param

$ \mu_v(lm): 2929.80$	$Q_v(lm.s): 2929.80$
$ \mu_e, \dot{E}(W/nm): 9.44$	$Q_e(J): 9.44$
$ \mu_e(W): 9.06$	$ \mu_{fr}(W): 0.40$
$ \dot{C}_e: 0.33$	$ \dot{C}_{fr}: 0.01$
$PPE(umol/s/w): 1.61$	$K_{fr}: 0.09$
$Erb_Ratio: 2.90$	$PPF(umol/s): 43.86$
$PF_{uv}(360-400)(umol/s): 0.00$	$PPF(400-500)(umol/s): 5.16$
$PPF(500-600)(umol/s): 17.98$	$PPF(600-700)(umol/s): 20.73$
$PF_{fr}(700-800)(umol/s): 2.34$	$PPF.t(umol): 43.86$
$ \mu_{ch-A.t}(J): 0.76$	$ \mu_{ch-A}(W): 0.76$
$ \mu_{ch-B.t}(J): 0.37$	$ \mu_{ch-B}(W): 0.37$
$ \mu_{b.t}(J): 1.34$	$ \mu_b(W): 1.34$
$ \mu_{y.t}(J): 3.87$	$ \mu_y(W): 3.87$
$ \mu_{r.t}(J): 3.94$	$ \mu_r(W): 3.94$

Electric Parameters

Voltage: 230.90V	Current: 0.1240A	Power: 27.19W
Power Factor: 0.9400	Frequency: 49.99Hz	

Condition: Tx: 22.7°C, Ti: 0.0°C, R.H.: 60%
 Test Lab:
 Operator: CRE

Test Device: Lisun LMS-9000B
 Test Time: 2021-02-12 11:57:48
 Inspector: