

Lightsource Test Report

Product Information

Product Category: LED-Lampen
 Product Spec: LED-E27-A50-6W-CW-dim-2250
 Manufacturer: METOLIGHT
 Buyer: 2250

Product Type: LED-Lampen-E27
 Product Number: 1
 Submitted Unit: 101163

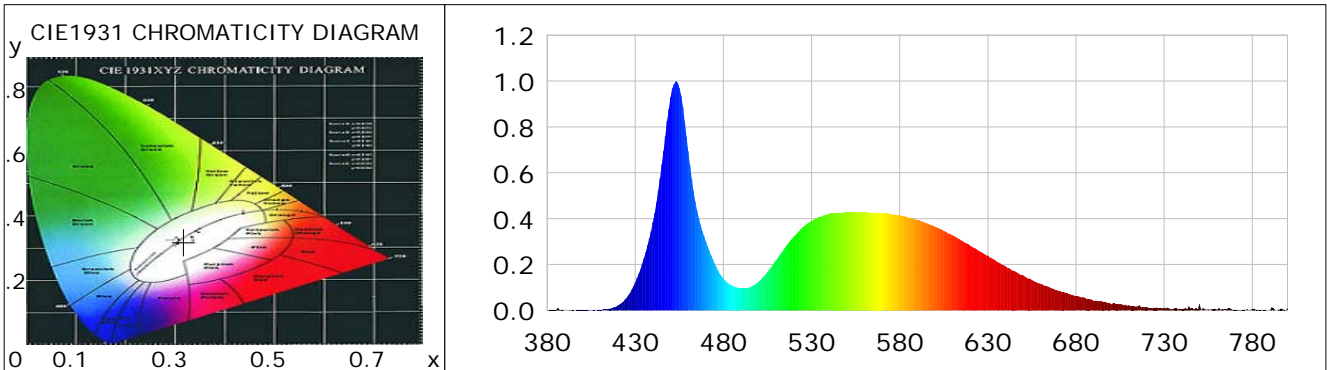
CIE Colorimetric Parameters

Chromaticity coordinates: $x=0.3173$ $y=0.3193$ $u(u')=0.2048$ $v=0.3091$ $v'=0.4637$
 CCT: $T_c=6320K$ ($duv=-0.00424$) Color Ratio: $R=0.136$ $G=0.820$ $B=0.044$
 Peak Wavelength: 453.2nm Half Bandwidth: 20.9nm
 Dominant Wavelength: 479.2nm Color Purity: 0.067
 CRI: $R_a=77.1$, $avgR(1\sim14)=67.8$, $avgR(1\sim15)=68.4$ TM30: $R_f=74$, $R_g=94$
 GAI: $GAI_BB_8=92.8$, $GAI_BB_15=99.1$, $GAI_EES=89.7$

R1 =77	R2 =82	R3 =80	R4 =77	R5 =76	R6 =72	R7 =85	R8 =68
R9 =0	R10=52	R11=73	R12=42	R13=78	R14=88	R15=76	

Color Quality Scale: $Q_a=70.8$, $Q_f=69.5$, $Q_p=74.6$, $Q_g=91.3$

Q1 =85	Q2 =95	Q3 =61	Q4 =51	Q5 =63	Q6 =71	Q7 =80	Q8 =87
Q9 =88	Q10=73	Q11=66	Q12=68	Q13=72	Q14=66	Q15=73	



Photometric Parameters

Luminous Flux: 527.14 lm	Efficiency: 84.07 lm/W	Radiant Power: 1.666 W
Total mains efficacy: 84.07 lm/W	Energy Efficiency Class: G (EU 2019/2015)	
Pupil Flux: 921.93 Plm	Pupil Lumens Per Watt: 147.04 Plm/W	Pupil Factor (Kp): 1.749
Cirtopic Flux: 2047.98 lm		

Electric Parameters

Voltage: 230.70V	Current: 0.0380A	Power: 6.27W
Power Factor: 0.7110	Frequency: 49.99Hz	

Test Information

Scan Range: 380~800:1nm	Photometric Method: sphere-spectroradiometer
Stabilization Time: 0 ms ALC.: 1.0000	Photometric Condition: Sphere diameter: 2.00m, 4PI
Max of Signal: 46133 (2893)	CCD Integration Time: 477.76 ms

Condition: Tx:0.0°C, Ti:0.0°C, R.H.:60%
 Test Lab:
 Operator: CRE

Test Device: Lisun LMS-9000B
 Test Time: 2021-04-28 10:43:33
 Inspector:

Lightsource Test Report

Product Information

Product Category: LED-Lampen
 Product Spec: LED-E27-A50-6W-CW-dim-2250
 Manufacturer: METOLIGHT
 Buyer: 2250

Product Type: LED-Lampen-E27
 Product Number: 1
 Submitted Unit: 101163

WL(nm)	PL	PE(mW/nm)	WL(nm)	PL	PE(mW/nm)	WL(nm)	PL	PE(mW/nm)
380	0.0012	0.0253	525	0.3628	7.3501	670	0.0858	1.7373
385	0.0017	0.0345	530	0.3890	7.8795	675	0.0759	1.5382
390	0.0011	0.0226	535	0.4075	8.2557	680	0.0617	1.2492
395	0.0007	0.0150	540	0.4218	8.5442	685	0.0547	1.1074
400	0.0015	0.0295	545	0.4262	8.6338	690	0.0407	0.8237
405	0.0006	0.0123	550	0.4284	8.6782	695	0.0378	0.7648
410	0.0019	0.0391	555	0.4289	8.6883	700	0.0271	0.5483
415	0.0073	0.1481	560	0.4269	8.6474	705	0.0284	0.5757
420	0.0203	0.4106	565	0.4261	8.6311	710	0.0227	0.4608
425	0.0531	1.0754	570	0.4250	8.6097	715	0.0188	0.3806
430	0.1214	2.4590	575	0.4208	8.5246	720	0.0141	0.2857
435	0.2281	4.6200	580	0.4145	8.3967	725	0.0118	0.2396
440	0.3843	7.7846	585	0.4036	8.1762	730	0.0118	0.2381
445	0.6370	12.9038	590	0.3934	7.9698	735	0.0057	0.1149
450	0.9297	18.8324	595	0.3807	7.7108	740	0.0058	0.1182
455	0.9717	19.6842	600	0.3639	7.3709	745	0.0082	0.1658
460	0.6942	14.0634	605	0.3458	7.0057	750	0.0269	0.5447
465	0.4359	8.8307	610	0.3277	6.6376	755	0.0046	0.0924
470	0.3015	6.1070	615	0.3049	6.1764	760	0.0028	0.0559
475	0.2044	4.1407	620	0.2827	5.7266	765	0.0041	0.0838
480	0.1380	2.7964	625	0.2580	5.2270	770	0.0011	0.0229
485	0.1074	2.1755	630	0.2381	4.8228	775	0.0028	0.0572
490	0.0957	1.9390	635	0.2125	4.3052	780	0.0054	0.1100
495	0.1002	2.0296	640	0.1921	3.8906	785	0.0032	0.0641
500	0.1250	2.5327	645	0.1720	3.4833	790	0.0002	0.0031
505	0.1672	3.3879	650	0.1528	3.0948	795	0.0016	0.0315
510	0.2196	4.4487	655	0.1324	2.6826	800	0.0112	0.2272
515	0.2746	5.5622	660	0.1157	2.3436			
520	0.3230	6.5431	665	0.1008	2.0416			

Condition: Tx:0.0°C, Ti:0.0°C, R.H.:60%
 Test Lab:
 Operator: CRE

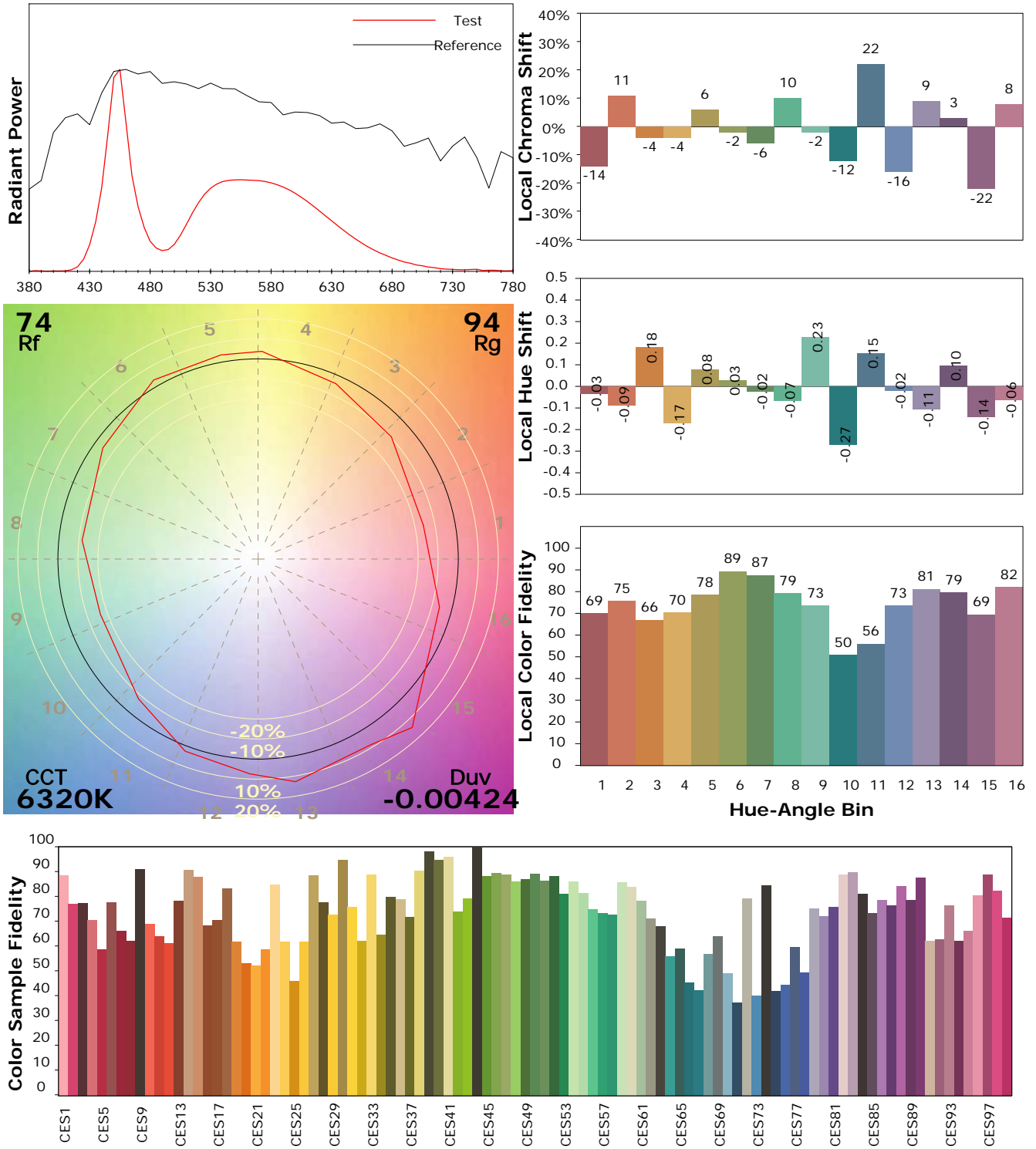
Test Device: Lisun LMS-9000B
 Test Time: 2021-04-28 10:43:33
 Inspector:

IES TM-30-18 Color Rendition Report

Product Information

Product Category: LED-Lampen
 Product Spec: LED-E27-A50-6W-CW-dim-2250
 Manufacturer: METOLIGHT
 Buyer: 2250

Product Type: LED-Lampen-E27
 Product Number: 1
 Submitted Unit: 101163



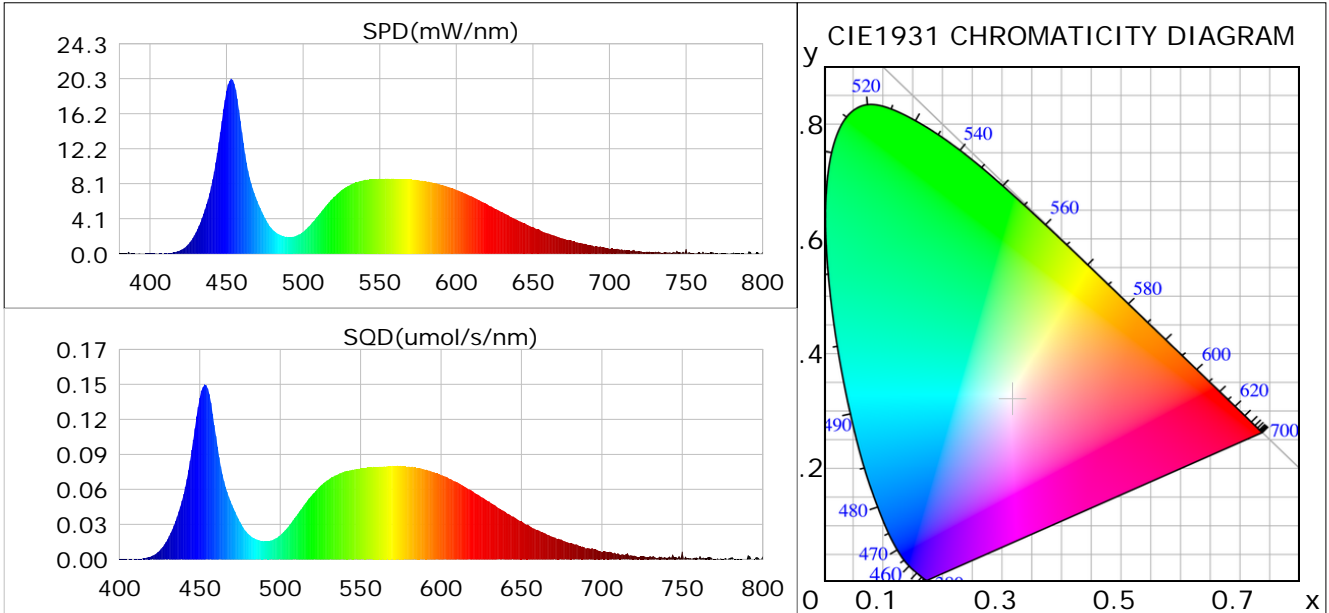
Condition: Tx:0.0°C, Ti:0.0°C, R.H.: 60%
 Test Lab:
 Operator: CRE

Test Device: Lisun LMS-9000B
 Test Time: 2021-04-28 10:43:33
 Inspector:

Plant optical param data

CIE Colorimetric Parameters

Chromaticity coordinates: $x=0.3173$ $y=0.3193$ $u(u')=0.2048$ $v=0.3091$ $v'=0.4637$
 CCT: $T_c=6320K$ ($duv=-0.00424$) Color Ratio: $R=0.136$ $G=0.820$ $B=0.044$
 Peak Wavelength: 453.2nm Half Bandwidth: 20.9nm
 Dominant Wavelength: 479.2nm Color Purity: 0.067
 CRI: $R_a=77.1$



Plant Optical Param

$ \mu_v(lm): 527.14$	$Q_v(lm.s): 527.14$
$ \mu_e, \dot{E}(W/nm): 1.67$	$Q_e(J): 1.67$
$ \mu_e(W): 1.65$	$ \mu_{fr}(W): 0.02$
$ \zeta_e: 0.26$	$ \zeta_{fr}: 0.00$
$PPE(umol/s/w): 1.18$	$K_{fr}: 0.02$
$Erb_Ratio: 0.61$	$PPF(umol/s): 7.40$
$PF_{uv}(360-400)(umol/s): 0.00$	$PPF(400-500)(umol/s): 2.13$
$PPF(500-600)(umol/s): 3.48$	$PPF(600-700)(umol/s): 1.80$
$PPF_{fr}(700-800)(umol/s): 0.11$	$PPF.t(umol): 7.40$
$ \mu_{ch-A.t}(J): 0.14$	$ \mu_{ch-A}(W): 0.14$
$ \mu_{ch-B.t}(J): 0.10$	$ \mu_{ch-B}(W): 0.10$
$ \mu_b.t(J): 0.56$	$ \mu_b(W): 0.56$
$ \mu_y.t(J): 0.75$	$ \mu_y(W): 0.75$
$ \mu_r.t(J): 0.35$	$ \mu_r(W): 0.35$

Electric Parameters

Voltage: 230.70V	Current: 0.0380A	Power: 6.27W
Power Factor: 0.7110	Frequency: 49.99Hz	

Condition: $T_x:0.0^\circ C$, $T_i:0.0^\circ C$, R.H.: 60%
 Test Lab:
 Operator: CRE

Test Device: Lisun LMS-9000B
 Test Time: 2021-04-28 10:43:33
 Inspector: