

Lightsource Test Report

Product Information

Product Category: LED-Lampen
 Product Spec: LED-SLG10-E27-12-360-WW
 Manufacturer: METOLIGHT
 Buyer: 3811

Product Type: LED-Strassenlampen
 Product Number: 1
 Submitted Unit: 100266

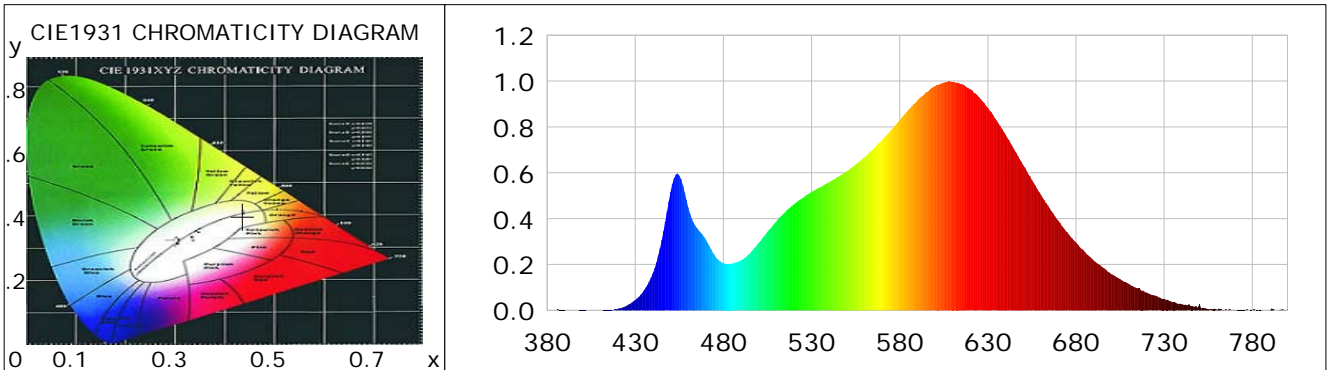
CIE Colorimetric Parameters

Chromaticity coordinates: $x=0.4363$ $y=0.3998$ $u(u')=0.2520$ $v=0.3464$ $v'=0.5196$
 CCT: $T_c=2975K$ ($duv=-0.00164$) Color Ratio: $R=0.237$ $G=0.736$ $B=0.027$
 Peak Wavelength: 608.0nm Half Bandwidth: 133.7nm
 Dominant Wavelength: 583.5nm Color Purity: 0.510
 CRI: $R_a=85.6$, $avgR(1\sim14)=81.0$, $avgR(1\sim15)=80.8$ TM30: $R_f=86$, $R_g=97$
 GAI: $GAI_BB_8=99.1$, $GAI_BB_15=107.0$, $GAI_EES=56.2$

R1 =85	R2 =93	R3 =97	R4 =84	R5 =85	R6 =92	R7 =84	R8 =65
R9 =22	R10=84	R11=83	R12=73	R13=87	R14=99	R15=79	

Color Quality Scale: $Q_a=84.3$, $Q_f=85.6$, $Q_p=86.6$, $Q_g=93.5$

Q1 =81	Q2 =95	Q3 =83	Q4 =80	Q5 =84	Q6 =86	Q7 =85	Q8 =87
Q9 =96	Q10=90	Q11=87	Q12=85	Q13=85	Q14=77	Q15=78	



Photometric Parameters

Luminous Flux: 1164.1 lm	Efficiency: 92.24 lm/W	Radiant Power: 3.590 W
Total mains efficacy: 92.24 lm/W	Energy Efficiency Class: F (EU 2019/2015)	
Pupil Flux: 1483.66 Plm	Pupil Lumens Per Watt: 117.56 Plm/W	Pupil Factor (Kp): 1.275
Cirtopic Flux: 2749.64 lm		

Electric Parameters

Voltage: 230.80V	Current: 0.0590A	Power: 12.62W
Power Factor: 0.9120	Frequency: 49.99Hz	

Test Information

Scan Range: 380~800:1nm	Photometric Method: sphere-spectroradiometer
Stabilization Time: 0 ms ALC.: 1.0000	Photometric Condition: Sphere diameter: 2.00m, 4PI
Max of Signal: 46801 (2697)	CCD Integration Time: 338.79 ms

Lightsource Test Report

Product Information

Product Category: LED-Lampen
 Product Spec: LED-SLG10-E27-12-360-WW
 Manufacturer: METOLIGHT
 Buyer: 3811

Product Type: LED-Strassenlampen
 Product Number: 1
 Submitted Unit: 100266

WL(nm)	PL	PE(mW/nm)	WL(nm)	PL	PE(mW/nm)	WL(nm)	PL	PE(mW/nm)
380	0.0007	0.0157	525	0.4902	11.7457	670	0.3910	9.3679
385	0.0012	0.0276	530	0.5161	12.3673	675	0.3408	8.1673
390	0.0010	0.0244	535	0.5372	12.8722	680	0.2962	7.0974
395	0.0002	0.0051	540	0.5581	13.3741	685	0.2543	6.0924
400	0.0008	0.0202	545	0.5815	13.9340	690	0.2173	5.2062
405	0.0000	0.0007	550	0.6060	14.5218	695	0.1875	4.4930
410	0.0007	0.0163	555	0.6355	15.2264	700	0.1584	3.7946
415	0.0016	0.0381	560	0.6671	15.9837	705	0.1364	3.2693
420	0.0064	0.1537	565	0.7049	16.8898	710	0.1157	2.7717
425	0.0194	0.4640	570	0.7446	17.8420	715	0.0963	2.3065
430	0.0451	1.0804	575	0.7856	18.8246	720	0.0770	1.8445
435	0.0874	2.0932	580	0.8294	19.8726	725	0.0646	1.5491
440	0.1616	3.8721	585	0.8740	20.9426	730	0.0504	1.2087
445	0.3066	7.3460	590	0.9149	21.9231	735	0.0359	0.8598
450	0.5160	12.3650	595	0.9513	22.7936	740	0.0275	0.6598
455	0.5873	14.0715	600	0.9774	23.4199	745	0.0186	0.4468
460	0.4494	10.7694	605	0.9940	23.8183	750	0.0277	0.6628
465	0.3588	8.5967	610	0.9955	23.8540	755	0.0062	0.1484
470	0.3082	7.3841	615	0.9875	23.6614	760	0.0032	0.0774
475	0.2412	5.7788	620	0.9642	23.1047	765	0.0046	0.1093
480	0.2052	4.9170	625	0.9293	22.2672	770	0.0021	0.0507
485	0.2043	4.8948	630	0.8837	21.1751	775	0.0022	0.0520
490	0.2179	5.2220	635	0.8275	19.8294	780	0.0026	0.0624
495	0.2484	5.9518	640	0.7671	18.3803	785	0.0025	0.0608
500	0.2940	7.0442	645	0.7007	16.7903	790	0.0005	0.0112
505	0.3431	8.2211	650	0.6338	15.1867	795	0.0010	0.0234
510	0.3881	9.2990	655	0.5679	13.6082	800	0.0056	0.1332
515	0.4274	10.2423	660	0.5058	12.1200			
520	0.4622	11.0741	665	0.4460	10.6862			

Condition: Tx:22.0'C, Ti:0.0'C, R.H.:60%
 Test Lab:
 Operator: CRE

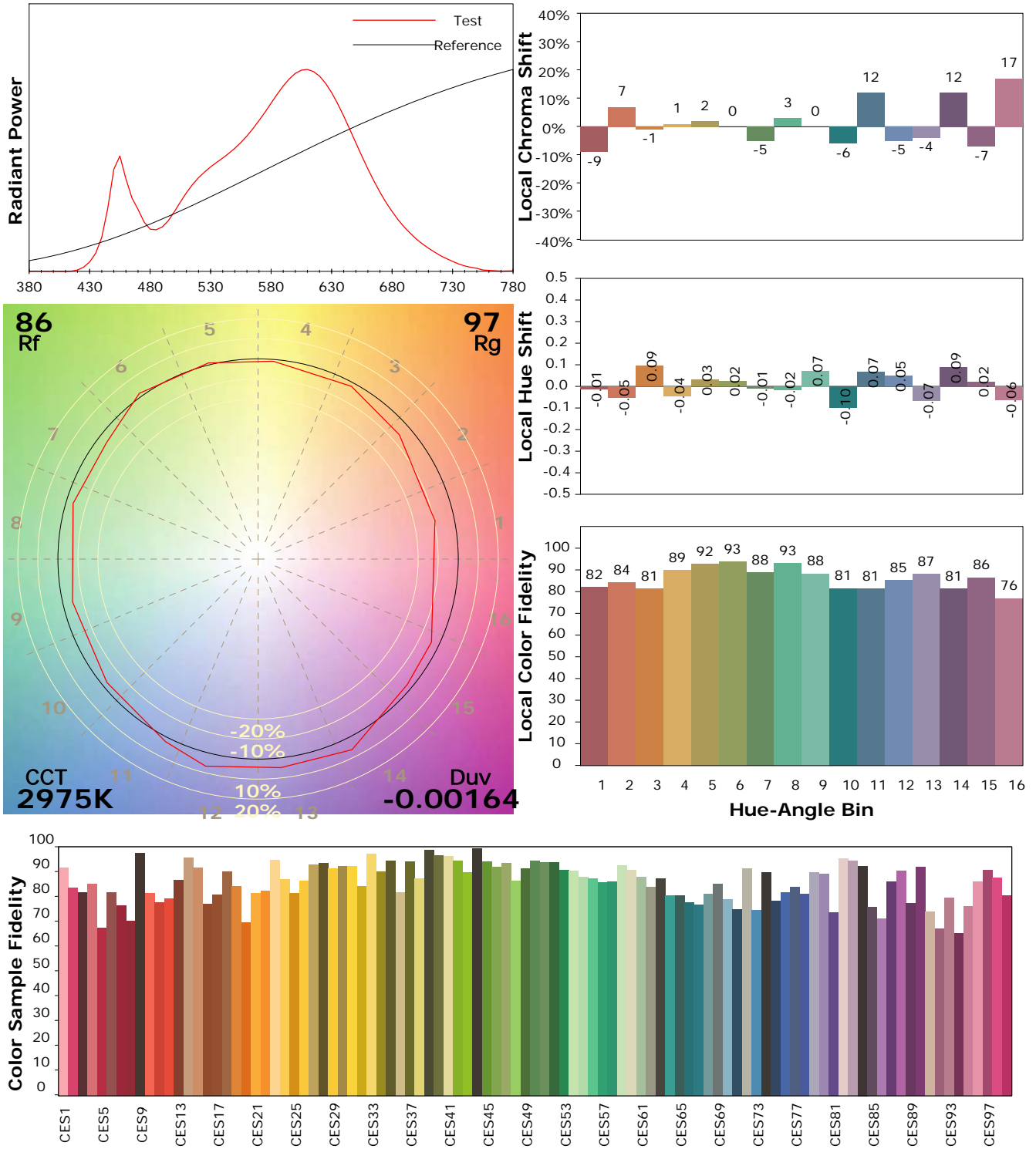
Test Device: Lisun LMS-9000B
 Test Time: 2021-02-11 14:25:11
 Inspector:

IES TM-30-18 Color Rendition Report

Product Information

Product Category: LED-Lampen
 Product Spec: LED-SLG10-E27-12-360-WW
 Manufacturer: METOLIGHT
 Buyer: 3811

Product Type: LED-Strassenlampen
 Product Number: 1
 Submitted Unit: 100266



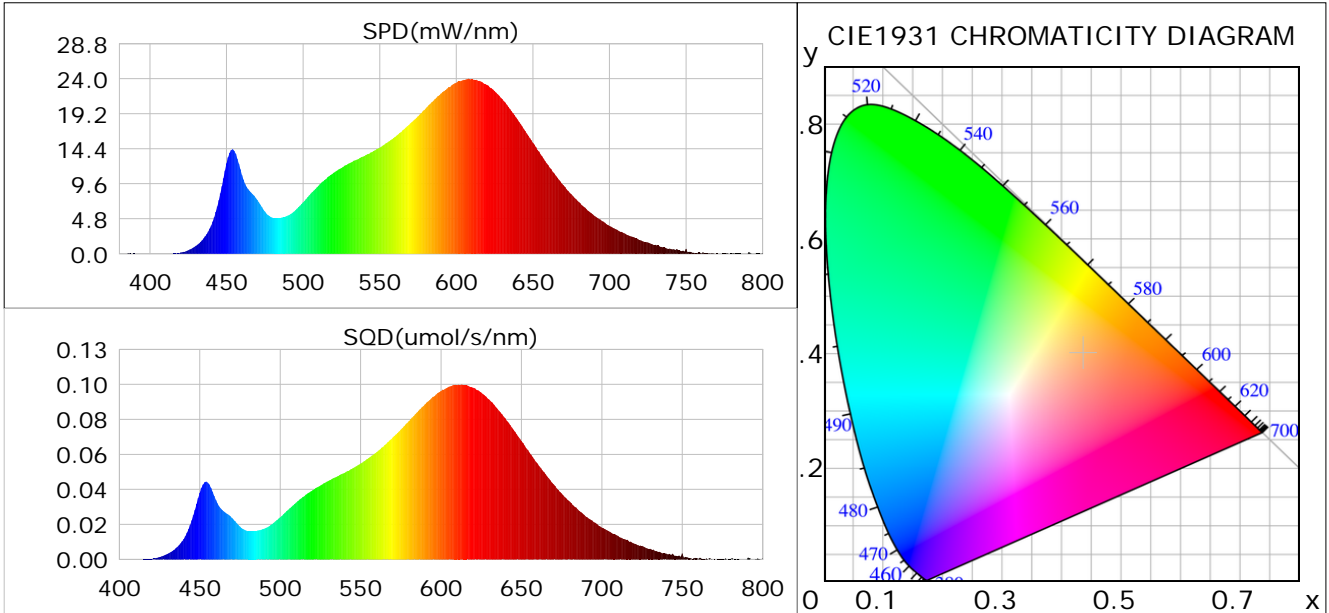
Condition: Tx:22.0°C, Ti:0.0°C, R.H.:60%
 Test Lab:
 Operator: CRE

Test Device: Lisun LMS-9000B
 Test Time: 2021-02-11 14:25:11
 Inspector:

Plant optical param data

CIE Colorimetric Parameters

Chromaticity coordinates: $x=0.4363$ $y=0.3998$ $u(u')=0.2520$ $v=0.3464$ $v'=0.5196$
 CCT: $T_c=2975K$ ($duv=-0.00164$) Color Ratio: $R=0.237$ $G=0.736$ $B=0.027$
 Peak Wavelength: 608.0nm Half Bandwidth: 133.7nm
 Dominant Wavelength: 583.5nm Color Purity: 0.510
 CRI: $R_a=85.6$



Plant Optical Param

$ \mu_v(lm): 1164.10$	$Q_v(lm.s): 1164.10$
$ \mu_e, \dot{E}(W/nm): 3.59$	$Q_e(J): 3.59$
$ \mu_e(W): 3.50$	$ \mu_{fr}(W): 0.09$
$ \zeta_e: 0.28$	$ \zeta_{fr}: 0.01$
$PPE(umol/s/w): 1.34$	$K_{fr}: 0.04$
$Erb_Ratio: 2.99$	$PPF(umol/s): 16.95$
$PF_{uv}(360-400)(umol/s): 0.00$	$PPF(400-500)(umol/s): 1.93$
$PPF(500-600)(umol/s): 7.12$	$PPF(600-700)(umol/s): 7.90$
$PPF_{fr}(700-800)(umol/s): 0.52$	$PPF.t(umol): 16.95$
$ \mu_{ch-A.t}(J): 0.28$	$ \mu_{ch-A}(W): 0.28$
$ \mu_{ch-B.t}(J): 0.14$	$ \mu_{ch-B}(W): 0.14$
$ \mu_b.t(J): 0.50$	$ \mu_b(W): 0.50$
$ \mu_y.t(J): 1.53$	$ \mu_y(W): 1.53$
$ \mu_r.t(J): 1.51$	$ \mu_r(W): 1.51$

Electric Parameters

Voltage: 230.80V	Current: 0.0590A	Power: 12.62W
Power Factor: 0.9120	Frequency: 49.99Hz	

Condition: $T_x: 22.0^\circ C$, $T_i: 0.0^\circ C$, R.H.: 60%
 Test Lab:
 Operator: CRE

Test Device: Lisun LMS-9000B
 Test Time: 2021-02-11 14:25:11
 Inspector: